

# 40V Precision Low Power Operational Amplifiers

## ISL28117, ISL28217, ISL28417

The ISL28117, ISL28217 and ISL28417 are a family of very high precision amplifiers featuring low noise vs power consumption, low offset voltage, low  $I_{BIAS}$  current and low temperature drift making them the ideal choice for applications requiring both high DC accuracy and AC performance. The combination of precision, low noise, and small footprint provides the user with outstanding value and flexibility relative to similar competitive parts.

Applications for these amplifiers include precision active filters, medical and analytical instrumentation, precision power supply controls, and industrial controls.

The ISL28117 single and ISL28217 dual are offered in an 8 Ld SOIC, MSOP and TDFN packages. The ISL28417 is offered in 14 Ld SOIC, 14 Ld TSSOP packages. All devices are offered in standard pin configurations and operate over the extended temperature range from  $-40^{\circ}\text{C}$  to  $+125^{\circ}\text{C}$ .

## Related Literature

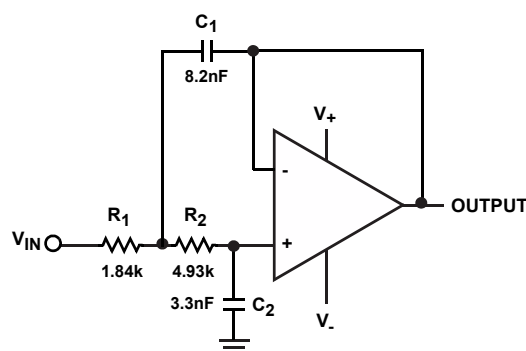
- See [AN1508](#) "ISL281X7SOICEVAL1Z Evaluation Board User's Guide"
- See [AN1509](#) "ISL282X7SOICEVAL2Z Evaluation Board User's Guide"

## Features

- Low input offset .....  $\pm 50\mu\text{V}$ , Max.
- Superb offset TC .....  $0.6\mu\text{V}/^{\circ}\text{C}$ , Max.
- Input bias current .....  $\pm 1\text{nA}$ , Max.
- Input bias current TC .....  $\pm 5\text{pA}/^{\circ}\text{C}$ , Max.
- Low current consumption .....  $440\mu\text{A}$
- Voltage noise .....  $8\text{nV}/\text{Hz}$
- Wide supply range .....  $4.5\text{V}$  to  $40\text{V}$
- Operating temperature range .....  $-40^{\circ}\text{C}$  to  $+125^{\circ}\text{C}$
- Small package offerings in single, dual and quad
- Pb-Free (RoHS compliant)
- No phase reversal

## Applications

- Precision instruments
- Medical instrumentation
- Spectral analysis equipment
- Active filter blocks
- Thermocouples and RTD reference buffers
- Data acquisition
- Power supply control



SALLEN-KEY LOW PASS FILTER (10kHz)

FIGURE 1. TYPICAL APPLICATION

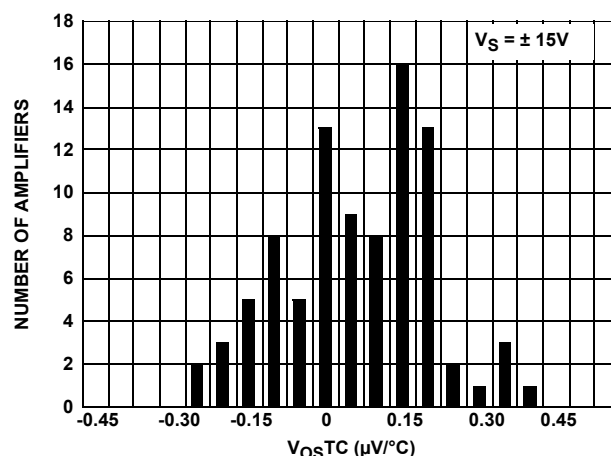


FIGURE 2.  $V_{OS}$  TEMPERATURE COEFFICIENT ( $V_{OSTC}$ )

# ISL28117, ISL28217, ISL28417

## Ordering Information

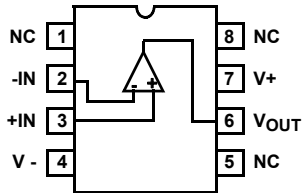
| PART NUMBER<br>(Notes 1, 2, 3) | PART<br>MARKING  | V <sub>OS</sub> (MAX)<br>( $\mu$ V) | PACKAGE<br>(Pb-Free) | PKG.<br>DWG. # |
|--------------------------------|------------------|-------------------------------------|----------------------|----------------|
| ISL28117FBBZ                   | 28117 FBZ        | 50 (B Grade)                        | 8 Ld SOIC            | M8.15E         |
| ISL28117FBZ                    | 28117 FBZ -C     | 100 (C Grade)                       | 8 Ld SOIC            | M8.15E         |
| ISL28117FUBZ                   | 8117Z            | 70 (B Grade)                        | 8 Ld MSOP            | M8.118B        |
| ISL28117FUZ                    | 8117Z -C         | 150 (C Grade)                       | 8 Ld MSOP            | M8.118B        |
| ISL28117FRTBZ                  | 8117             | 75 (B Grade)                        | 8 Ld TDFN            | L8.3x3K        |
| ISL28117FRTZ                   | -C 8117          | 150 (C Grade)                       | 8 Ld TDFN            | L8.3x3K        |
| ISL28217FBBZ                   | 28217 FBZ        | 50 (B Grade)                        | 8 Ld SOIC            | M8.15E         |
| ISL28217FBZ                    | 28217 FBZ -C     | 100 (C Grade)                       | 8 Ld SOIC            | M8.15E         |
| Coming Soon<br>ISL28217FUBZ    | 8217Z            | TBD (B Grade)                       | 8 Ld MSOP            | M8.118B        |
| ISL28217FUZ                    | 8217Z -C         | 150 (C Grade)                       | 8 Ld MSOP            | M8.118B        |
| ISL28217FRTBZ                  | 8217             | 70 (B Grade)                        | 8 Ld TDFN            | L8.3x3K        |
| ISL28217FRTZ                   | -C 8217          | 150 (C Grade)                       | 8 Ld TDFN            | L8.3x3K        |
| ISL28417FBBZ                   | 28417 FBZ        | 120 (B Grade)                       | 14 Ld SOIC           | MDP0027        |
| ISL28417FBZ                    | 28417 FBZ -C     | 200 (C Grade)                       | 14 Ld SOIC           | MDP0027        |
| ISL28417FVBZ                   | 28417 FVZ        | 120 (B Grade)                       | 14 Ld TSSOP          | M14.173        |
| ISL28417FVZ                    | 28417 FVZ-C      | 200 (C Grade)                       | 14 Ld TSSOP          | M14.173        |
| ISL28117SOICEVAL1Z             | Evaluation Board |                                     |                      |                |
| ISL28217SOICEVAL2Z             | Evaluation Board |                                     |                      |                |

### NOTES:

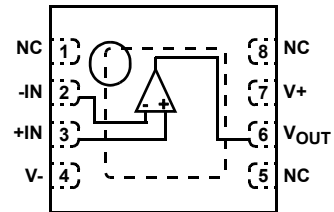
1. Add "-T\*" suffix for tape and reel. Please refer to [TB347](#) for details on reel specifications.
2. These Intersil Pb-free plastic packaged products employ special Pb-free material sets, molding compounds/die attach materials, and 100% matte tin plate plus anneal (e3 termination finish, which is RoHS compliant and compatible with both SnPb and Pb-free soldering operations). Intersil Pb-free products are MSL classified at Pb-free peak reflow temperatures that meet or exceed the Pb-free requirements of IPC/JEDEC J STD-020.
3. For Moisture Sensitivity Level (MSL), please see device information page for [ISL28117](#), [ISL28217](#), [ISL28417](#). For more information on MSL please see techbrief [TB363](#).

## Pin Configurations

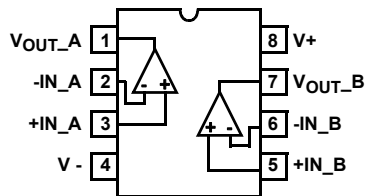
ISL28117  
(8 LD SOIC, MSOP)  
TOP VIEW



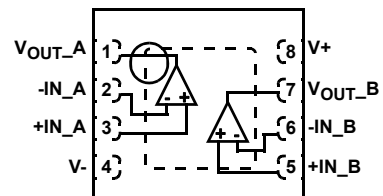
ISL28117  
(8 LD TDFN)  
TOP VIEW



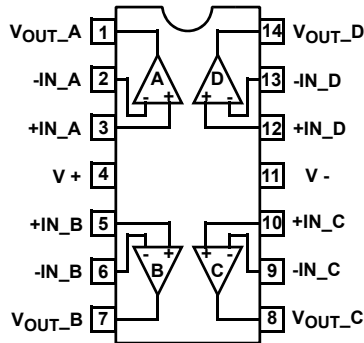
ISL28217  
(8 LD SOIC, MSOP)  
TOP VIEW



ISL28217  
(8 LD TDFN)  
TOP VIEW

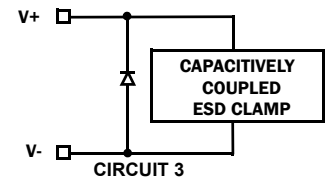
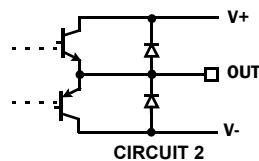
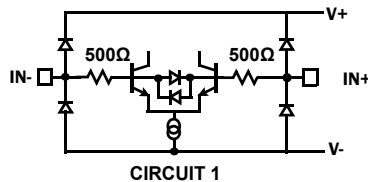


ISL28417  
(14 LD SOIC, TSSOP)  
TOP VIEW



## Pin Descriptions

| ISL28117<br>(8 LD SOIC,<br>MSOP, TDFN) | ISL28217<br>(8 LD SOIC,<br>MSOP, TDFN) | ISL28417<br>(14 LD SOIC, TSSOP) | PIN NAME           | EQUIVALENT CIRCUIT | DESCRIPTION   |
|--|--|---------------------------------|--------------------|--------------------|---|
| 3                                      | -                                      | -                               | +IN                | Circuit 1          | Amplifier non-inverting input   |
| -                                      | 3                                      | 3                               | +IN_A              |                    |   |
| -                                      | 5                                      | 5                               | +IN_B              |                    |   |
| -                                      | -                                      | 10                              | +IN_C              |                    |   |
| -                                      | -                                      | 12                              | +IN_D              |                    |   |
| 4                                      | 4                                      | 11                              | V-                 | Circuit 3          | Negative power supply   |
| 2                                      | -                                      | -                               | -IN                | Circuit 1          | Amplifier inverting input   |
| -                                      | 2                                      | 2                               | -IN_A              |                    |   |
| -                                      | 6                                      | 6                               | -IN_B              |                    |   |
| -                                      | -                                      | 9                               | -IN_C              |                    |   |
| -                                      | -                                      | 13                              | -IN_D              |                    |   |
| 7                                      | 8                                      | 4                               | V+                 | Circuit 3          | Positive power supply   |
| 6                                      | -                                      | -                               | V <sub>OUT</sub>   | Circuit 2          | Amplifier output  |
| -                                      | 1                                      | 1                               | V <sub>OUT-A</sub> |                    |   |
| -                                      | 7                                      | 7                               | V <sub>OUT-B</sub> |                    |   |
| -                                      | -                                      | 8                               | V <sub>OUT-C</sub> |                    |   |
| -                                      | -                                      | 14                              | V <sub>OUT-D</sub> |                    |   |
| 1, 5, 8                                | -                                      | -                               | NC                 | -                  | No internal connection  |
| PD                                     | PD                                     | -                               | PD                 | -                  | Thermal Pad - TDFN package only.<br>Connect thermal pad to ground or most negative potential. |



## Table of Contents

|   |           |
|---|-----------|
| <b>Absolute Maximum Ratings</b> .....                           | <b>6</b>  |
| <b>Thermal Information</b> .....                                | <b>6</b>  |
| <b>Recommended Operating Conditions</b> .....                   | <b>6</b>  |
| <b>Electrical Specifications <math>V_S \pm 15V</math></b> ..... | <b>6</b>  |
| <b>Electrical Specifications <math>V_S \pm 5V</math></b> .....  | <b>8</b>  |
| <b>Typical Performance Curves</b> .....                         | <b>10</b> |
| <b>Applications Information</b> .....                           | <b>19</b> |
| Functional Description .....                                    | 19        |
| Operating Voltage Range .....                                   | 19        |
| Input Performance 19 .....                                      | 19        |
| Input ESD Diode Protection .....                                | 19        |
| Output Current Limiting .....                                   | 20        |
| Output Phase Reversal .....                                     | 20        |
| Unused Channels .....   | 20        |
| Power Dissipation .....   | 20        |
| ISL28117, ISL28217 and ISL28417 SPICE Model .....               | 20        |
| License Statement .....   | 21        |
| <b>Characterization vs Simulation Results</b> .....             | <b>24</b> |
| <b>Revision History</b> .....                                   | <b>26</b> |
| <b>Products</b> .....   | <b>29</b> |
| <b>Package Outline Drawing (M8.15E)</b> .....                   | <b>30</b> |
| <b>Package Outline Drawing (M8.118B)</b> .....                  | <b>31</b> |
| <b>Package Outline Drawing (L8.3x3K)</b> .....                  | <b>32</b> |
| <b>MDP0027</b> .....  | <b>33</b> |
| <b>Package Outline Drawing (M14.173)</b> .....                  | <b>34</b> |

# ISL28117, ISL28217, ISL28417

## Absolute Maximum Ratings

|  |  |
|--|--|
| Maximum Supply Voltage   | 42V  |
| Maximum Differential Input Current   | 20mA   |
| Maximum Differential Input Voltage   | 42V  |
| Min/Max Input Voltage  | V <sub>-</sub> - 0.5V to V <sub>+</sub> + 0.5V |
| Max/Min Input current for Input Voltage >V <sub>+</sub> or <V <sub>-</sub> | ±20mA  |
| Output Short-Circuit Duration (1 output at a time)                         | Indefinite                                     |
| ESD Rating   |  |
| Human Body Model   | 4.5kV  |
| Machine Model  | 500V   |
| Machine Model (ISL28217 MSOP only)   | 300V   |
| Charged Device Model   | 1.5kV  |
| ESD Rating (ISL28417 SOIC)   |  |
| Human Body Model   | 6kV  |
| Machine Model  | 450V   |
| Charged Device Model   | 2kV  |

## Thermal Information

| Thermal Resistance (Typical)                      | $\theta_{JA}$ (°C/W)  | $\theta_{JC}$ (°C/W) |
|---|---|----------------------|
| 8 Ld SOIC ISL28117 (Notes 4, 7)                   | 120   | 60                   |
| 8 Ld SOIC ISL28217 (Notes 4, 7)                   | 105   | 50                   |
| 8 Ld MSOP ISL28117 (Notes 4, 7)                   | 155   | 50                   |
| 8 Ld MSOP ISL28217 (Notes 4, 7)                   | 160   | 55                   |
| 8 Ld TDFN ISL28117 (Notes 5, 6)                   | 48  | 7                    |
| 8 Ld TDFN ISL28217 (Notes 5, 6)                   | 43  | 2                    |
| 14 Ld SOIC (Notes 5, 7)                           | 73  | 45                   |
| 14 Ld TSSOP (Notes 4, 7)                          | 90  | 32                   |
| Maximum Storage Temperature Range                 | -65°C to +150°C   |                      |
| Maximum Junction Temperature (T <sub>JMAX</sub> ) | +150°C  |                      |
| Pb-Free Reflow Profile                            | see link below<br><a href="http://www.intersil.com/pbfree/Pb-FreeReflow.asp">http://www.intersil.com/pbfree/Pb-FreeReflow.asp</a> |                      |

## Recommended Operating Conditions

Ambient Temperature Range (T<sub>A</sub>) ..... -40°C to +125°C

**CAUTION:** Do not operate at or near the maximum ratings listed for extended periods of time. Exposure to such conditions may adversely impact product reliability and result in failures not covered by warranty.

### NOTES:

4.  $\theta_{JA}$  is measured with the component mounted on a high effective thermal conductivity test board in free air. See Tech Brief [TB379](#) for details.
5.  $\theta_{JA}$  is measured in free air with the component mounted on a high effective thermal conductivity test board with “direct attach” features. See Tech Brief [TB379](#).
6. For  $\theta_{JC}$ , the “case temp” location is the center of the exposed metal pad on the package underside.
7. For  $\theta_{JC}$ , the “case temp” location is taken at the package top center.

**Electrical Specifications** V<sub>S</sub> ± 15V, V<sub>CM</sub> = 0, V<sub>O</sub> = 0V, T<sub>A</sub> = +25°C, unless otherwise noted. **Boldface limits apply over the operating temperature range, -40°C to +125°C.**

| PARAMETER       | DESCRIPTION                               | CONDITIONS  | MIN<br>(Note 8) | TYP | MAX<br>(Note 8) | UNIT |
|-----------------|---|---|-----------------|-----|-----------------|------|
| V <sub>OS</sub> | Input Offset Voltage, SOIC, TSSOP Package | ISL28x17 B Grade                                    | -50             | 8   | 50              | μV   |
|                 |   |   | <b>-110</b>     |     | <b>110</b>      | μV   |
|                 |   | ISL28x17 C Grade                                    | -100            | 4   | 100             | μV   |
|                 |   |   | <b>-190</b>     |     | <b>190</b>      | μV   |
|                 |   | ISL28417 B Grade                                    | -70             | 10  | 70              | μV   |
|                 |   |   | <b>-120</b>     |     | <b>120</b>      | μV   |
|                 |   | ISL28417 C Grade<br>T <sub>A</sub> = -40°C to +85°C | -110            | 10  | 110             | μV   |
|                 |   |   | -160            |     | 160             | μV   |
|                 | Input Offset Voltage, MSOP Package        | ISL28117 B Grade                                    | -70             | -10 | 70              | μV   |
|                 |   |   | <b>-150</b>     |     | <b>150</b>      | μV   |
|                 |   | ISL28117 C Grade                                    | -150            | 4   | 150             | μV   |
|                 |   |   | <b>-250</b>     |     | <b>250</b>      | μV   |
|                 |   | ISL28217 C Grade                                    | -150            | 10  | 150             | μV   |
|                 |   |   | <b>-250</b>     |     | <b>250</b>      | μV   |
|                 | Input Offset Voltage, TDFN Package        | ISL28117 B Grade                                    | -75             | -10 | 75              | μV   |
|                 |   |   | <b>-160</b>     |     | <b>160</b>      | μV   |
|                 |   | ISL28217 B Grade                                    | -70             | 10  | 70              | μV   |
|                 |   |   | <b>-140</b>     |     | <b>140</b>      | μV   |
|                 |   | ISL28x17 C Grade                                    | -150            | 10  | 150             | μV   |
|                 |   |   | <b>-250</b>     |     | <b>250</b>      | μV   |

# ISL28117, ISL28217, ISL28417

**Electrical Specifications**  $V_S \pm 15V$ ,  $V_{CM} = 0$ ,  $V_O = 0V$ ,  $T_A = +25^\circ C$ , unless otherwise noted. **Boldface limits apply over the operating temperature range,  $-40^\circ C$  to  $+125^\circ C$ .** (Continued)

| PARAMETER                | DESCRIPTION   | CONDITIONS   | MIN<br>(Note 8)              | TYP         | MAX<br>(Note 8)            | UNIT             |
|--------------------------|---|--|------------------------------|-------------|----------------------------|------------------|
| TCV <sub>OS</sub>        | Input Offset Voltage Temperature Coefficient; SOIC, TSSOP Package | ISL28x17 B Grade   | <b>-0.6</b>                  | <b>0.14</b> | <b>0.6</b>                 | $\mu V/^\circ C$ |
|                          |   | ISL28x17 C Grade   | <b>-0.9</b>                  | <b>0.14</b> | <b>0.9</b>                 | $\mu V/^\circ C$ |
|                          |   | ISL28417 B Grade   | <b>-0.75</b>                 | <b>0.2</b>  | <b>0.75</b>                | $\mu V/^\circ C$ |
|                          |   | ISL28417 C Grade   | <b>-0.9</b>                  | <b>0.3</b>  | <b>0.9</b>                 | $\mu V/^\circ C$ |
|                          | Input Offset Voltage Temperature Coefficient; MSOP Package        | ISL28117 B Grade   | <b>-0.8</b>                  | <b>0.1</b>  | <b>0.8</b>                 | $\mu V/^\circ C$ |
|                          |   | ISL28117 C Grade   | <b>-1</b>                    | <b>0.14</b> | <b>1</b>                   | $\mu V/^\circ C$ |
|                          |   | ISL28217 C Grade   | <b>-1</b>                    | <b>0.14</b> | <b>1</b>                   | $\mu V/^\circ C$ |
|                          | Input Offset Voltage Temperature Coefficient; TDFN Package        | ISL28117 B Grade   | <b>-0.9</b>                  | <b>0.1</b>  | <b>0.9</b>                 | $\mu V/^\circ C$ |
|                          |   | ISL28217 B Grade   | <b>-0.7</b>                  | <b>0.1</b>  | <b>0.7</b>                 | $\mu V/^\circ C$ |
|                          |   | ISL28x17 C Grade   | <b>-1</b>                    | <b>0.1</b>  | <b>1</b>                   | $\mu V/^\circ C$ |
| I <sub>B</sub>           | Input Bias Current  |  | -1                           | 0.08        | 1                          | nA               |
|                          |   |  | <b>-1.5</b>                  |             | <b>1.5</b>                 | nA               |
| TCI <sub>B</sub>         | Input Bias Current Temperature Coefficient                        |  | <b>-5</b>                    | <b>1</b>    | <b>5</b>                   | $pA/^\circ C$    |
| I <sub>OS</sub>          | Input Offset Current  |  | -1.5                         | 0.08        | 1.5                        | nA               |
|                          |   |  | <b>-1.85</b>                 |             | <b>1.85</b>                | nA               |
| TCI <sub>OS</sub>        | Input Offset Current Temperature Coefficient                      |  | <b>-3</b>                    | <b>0.42</b> | <b>3</b>                   | $pA/^\circ C$    |
|                          |   | ISL28417 SOIC, TSSOP B and C Grade                                     | <b>-4.0</b>                  | <b>0.45</b> | <b>4.0</b>                 | $pA/^\circ C$    |
| V <sub>CM</sub>          | Input Voltage Range   | Guaranteed by CMRR test  | <b>-13</b>                   |             | <b>13</b>                  | V                |
| CMRR                     | Common-Mode Rejection Ratio                                       | V <sub>CM</sub> = -13V to +13V   | 120                          | 145         |                            | dB               |
|                          |   |  | <b>120</b>                   |             |                            | dB               |
| PSRR                     | Power Supply Rejection Ratio                                      | V <sub>S</sub> = $\pm 2.25V$ to $\pm 20V$                              | 120                          | 145         |                            | dB               |
|                          |   |  | <b>120</b>                   |             |                            | dB               |
| A <sub>VOL</sub>         | Open-Loop Gain  | V <sub>O</sub> = -13V to +13V, R <sub>L</sub> = 10k $\Omega$ to ground | 130                          | 143         |                            | dB               |
| V <sub>OH</sub>          | Output Voltage High   | R <sub>L</sub> = 10k $\Omega$ to ground                                | 13.5                         | 13.7        |                            | V                |
|                          |   |  | <b>13.2</b>                  |             |                            | V                |
|                          |   | R <sub>L</sub> = 2k $\Omega$ to ground                                 | 13.3                         | 13.55       |                            | V                |
|                          |   |  | <b>13.1</b>                  |             |                            | V                |
| V <sub>OL</sub>          | Output Voltage Low  | R <sub>L</sub> = 10k $\Omega$ to ground                                |                              | -13.7       | -13.5                      | V                |
|                          |   |  |                              |             | <b>-13.2</b>               | V                |
|                          |   | R <sub>L</sub> = 2k $\Omega$ to ground                                 |                              | -13.55      | -13.3                      | V                |
|                          |   |  |                              |             | <b>-13.1</b>               | V                |
| I <sub>S</sub>           | Supply Current/Amplifier  |  |                              | 0.44        | 0.53                       | mA               |
|                          |   |  |                              |             | <b>0.68</b>                | mA               |
| I <sub>SC</sub>          | Short-Circuit   |  |                              | 43          |                            | mA               |
| V <sub>SUPPLY</sub>      | Supply Voltage Range  | Guaranteed by PSRR   | <b><math>\pm 2.25</math></b> |             | <b><math>\pm 20</math></b> | V                |
| <b>AC SPECIFICATIONS</b> |   |  |                              |             |                            |                  |
| GBWP                     | Gain Bandwidth Product  | A <sub>V</sub> = 1k, R <sub>L</sub> = 2k $\Omega$                      |                              | 1.5         |                            | MHz              |
| e <sub>nVp-p</sub>       | Voltage Noise V <sub>P-P</sub>                                    | 0.1Hz to 10Hz  |                              | 0.25        |                            | $\mu V_{P-P}$    |
| e <sub>n</sub>           | Voltage Noise Density   | f = 10Hz   |                              | 10          |                            | nV/ $\sqrt{Hz}$  |
| e <sub>n</sub>           | Voltage Noise Density   | f = 100Hz  |                              | 8.2         |                            | nV/ $\sqrt{Hz}$  |
| e <sub>n</sub>           | Voltage Noise Density   | f = 1kHz   |                              | 8           |                            | nV/ $\sqrt{Hz}$  |
| e <sub>n</sub>           | Voltage Noise Density   | f = 10kHz  |                              | 8           |                            | nV/ $\sqrt{Hz}$  |

# ISL28117, ISL28217, ISL28417

**Electrical Specifications**  $V_S \pm 15V$ ,  $V_{CM} = 0$ ,  $V_O = 0V$ ,  $T_A = +25^\circ C$ , unless otherwise noted. **Boldface limits apply over the operating temperature range,  $-40^\circ C$  to  $+125^\circ C$ .** (Continued)

| PARAMETER   | DESCRIPTION   | CONDITIONS   | MIN<br>(Note 8) | TYP    | MAX<br>(Note 8) | UNIT   |
|---|---|--|-----------------|--------|-----------------|--------|
| in  | Current Noise Density                                       | f = 1kHz   |                 | 0.1    |                 | pA/√Hz |
| THD + N   | Total Harmonic Distortion                                   | 1kHz, G = 1, V <sub>O</sub> = 3.5V <sub>RMS</sub> , R <sub>L</sub> = 2kΩ                                 |                 | 0.0009 |                 | %      |
|   |   | 1kHz, G = 1, V <sub>O</sub> = 3.5V <sub>RMS</sub> , R <sub>L</sub> = 10kΩ                                |                 | 0.0005 |                 | %      |
| TRANSIENT RESPONSE                                |   |  |                 |        |                 |        |
| SR  | Slew Rate, V <sub>OUT</sub> 20% to 80%                      | A <sub>V</sub> = 11, R <sub>L</sub> = 2kΩ, V <sub>O</sub> = 4V <sub>P-P</sub>                            |                 | 0.5    |                 | V/μs   |
| t <sub>r</sub> , t <sub>f</sub> ,<br>Small Signal | Rise Time<br>10% to 90% of V <sub>OUT</sub>                 | A <sub>V</sub> = 1, V <sub>OUT</sub> = 50mV <sub>P-P</sub> ,<br>R <sub>L</sub> = 10kΩ to V <sub>CM</sub> |                 | 130    |                 | ns     |
|   | Fall Time<br>90% to 10% of V <sub>OUT</sub>                 | A <sub>V</sub> = 1, V <sub>OUT</sub> = 50mV <sub>P-P</sub> , R <sub>L</sub> = 10kΩ to V <sub>CM</sub>    |                 | 130    |                 | ns     |
| t <sub>s</sub>                                    | Settling Time to 0.1%<br>10V Step; 10% to V <sub>OUT</sub>  | A <sub>V</sub> = -1, V <sub>OUT</sub> = 10V <sub>P-P</sub> , R <sub>L</sub> = 5kΩ to V <sub>CM</sub>     |                 | 21     |                 | μs     |
|   | Settling Time to 0.01%<br>10V Step; 10% to V <sub>OUT</sub> | A <sub>V</sub> = -1, V <sub>OUT</sub> = 10V <sub>P-P</sub> , R <sub>L</sub> = 5kΩ to V <sub>CM</sub>     |                 | 24     |                 | μs     |
|   | Settling Time to 0.1%<br>4V Step; 10% to V <sub>OUT</sub>   | A <sub>V</sub> = -1, V <sub>OUT</sub> = 4V <sub>P-P</sub> , R <sub>L</sub> = 5kΩ to V <sub>CM</sub>      |                 | 13     |                 | μs     |
|   | Settling Time to 0.01%<br>4V Step; 10% to V <sub>OUT</sub>  | A <sub>V</sub> = -1, V <sub>OUT</sub> = 4V <sub>P-P</sub> , R <sub>L</sub> = 5kΩ to V <sub>CM</sub>      |                 | 18     |                 | μs     |
| t <sub>OL</sub>                                   | Output Positive Overload Recovery Time                      | A <sub>V</sub> = -100, V <sub>IN</sub> = 0.2V <sub>P-P</sub> , R <sub>L</sub> = 2kΩ to V <sub>CM</sub>   |                 | 5.6    |                 | μs     |
|   | Output Negative Overload Recovery Time                      | A <sub>V</sub> = -100, V <sub>IN</sub> = 0.2V <sub>P-P</sub> , R <sub>L</sub> = 2kΩ to V <sub>CM</sub>   |                 | 10.6   |                 | μs     |

**Electrical Specifications**  $V_S \pm 5V$ ,  $V_{CM} = 0$ ,  $V_O = 0V$ ,  $T_A = +25^\circ C$ , unless otherwise noted. **Boldface limits apply over the operating temperature range,  $-40^\circ C$  to  $+125^\circ C$ .**

| PARAMETER | DESCRIPTION                                  | CONDITIONS  | MIN<br>(Note 8)     | TYP | MAX<br>(Note 8)   | UNIT    |
|-----------|--|---|---------------------|-----|-------------------|---------|
| $V_{OS}$  | Input Offset Voltage, SOIC, TSSOP<br>Package | ISL28x17 B Grade  | -50                 | 8   | 50                | $\mu V$ |
|           |  |   | <b>-110</b>         |     | <b>110</b>        | $\mu V$ |
|           |  | ISL28x17 C Grade  | -100                | 4   | 100               | $\mu V$ |
|           |  |   | <b>-190</b>         |     | <b>190</b>        | $\mu V$ |
|           |  | ISL28417 B Grade  | -70                 | 10  | 70                | $\mu V$ |
|           |  |   | <b>-120</b>         |     | <b>120</b>        | $\mu V$ |
|           |  | ISL28417 C Grade<br>$T_A = -40^\circ C$ to $+85^\circ C$<br>$T_A = -40^\circ C$ to $+125^\circ C$ | -110                | 10  | 110               | $\mu V$ |
|           |  |   | -160<br><b>-200</b> |     | 160<br><b>200</b> | $\mu V$ |
|           | Input Offset Voltage, MSOP Package           | ISL28117 B Grade  | -70                 | -10 | 70                | $\mu V$ |
|           |  |   | <b>-150</b>         |     | <b>150</b>        | $\mu V$ |
|           |  | ISL28117 C Grade  | -150                | 4   | 150               | $\mu V$ |
|           |  |   | <b>-250</b>         |     | <b>250</b>        | $\mu V$ |
|           |  | ISL28217 C Grade  | -150                | 10  | 150               | $\mu V$ |
|           |  |   | <b>-250</b>         |     | <b>250</b>        | $\mu V$ |
|           | Input Offset Voltage, TDFN Package           | ISL28117 B Grade  | -75                 | -10 | 75                | $\mu V$ |
|           |  |   | <b>-160</b>         |     | <b>160</b>        | $\mu V$ |
|           |  | ISL28217 B Grade  | -70                 | 10  | 70                | $\mu V$ |
|           |  |   | <b>-140</b>         |     | <b>140</b>        | $\mu V$ |
|           |  | ISL28x17 C Grade  | -150                | 10  | 150               | $\mu V$ |
|           |  |   | <b>-250</b>         |     | <b>250</b>        | $\mu V$ |



# ISL28117, ISL28217, ISL28417

**Electrical Specifications**  $V_S \pm 5V$ ,  $V_{CM} = 0$ ,  $V_O = 0V$ ,  $T_A = +25^\circ C$ , unless otherwise noted. **Boldface limits apply over the operating temperature range,  $-40^\circ C$  to  $+125^\circ C$ .** (Continued)

| PARAMETER         | DESCRIPTION   | CONDITIONS   | MIN<br>(Note 8) | TYP         | MAX<br>(Note 8) | UNIT             |
|-------------------|---|--|-----------------|-------------|-----------------|------------------|
| TCV <sub>OS</sub> | Input Offset Voltage Temperature Coefficient; SOIC, TSSOP Package | ISL28x17 B Grade   | <b>-0.6</b>     | <b>0.14</b> | <b>0.6</b>      | $\mu V/^\circ C$ |
|                   |   | ISL28x17 C Grade   | <b>-0.9</b>     | <b>0.14</b> | <b>0.9</b>      | $\mu V/^\circ C$ |
|                   |   | ISL28417 B Grade   | <b>-0.75</b>    | <b>0.2</b>  | <b>0.75</b>     | $\mu V/^\circ C$ |
|                   |   | ISL28417 C Grade   | <b>-0.9</b>     | <b>0.3</b>  | <b>0.9</b>      | $\mu V/^\circ C$ |
|                   | Input Offset Voltage Temperature Coefficient; MSOP Package        | ISL28117 B Grade   | <b>-0.8</b>     | <b>0.1</b>  | <b>0.8</b>      | $\mu V/^\circ C$ |
|                   |   | ISL28117 C Grade   | <b>-1</b>       | <b>0.14</b> | <b>1</b>        | $\mu V/^\circ C$ |
|                   |   | ISL28217 C Grade   | <b>-1</b>       | <b>0.14</b> | <b>1</b>        | $\mu V/^\circ C$ |
|                   | Input Offset Voltage Temperature Coefficient; TDFN Package        | ISL28117 B Grade   | <b>-0.9</b>     | <b>0.1</b>  | <b>0.9</b>      | $\mu V/^\circ C$ |
|                   |   | ISL28217 B Grade   | <b>-0.7</b>     | <b>0.1</b>  | <b>0.7</b>      | $\mu V/^\circ C$ |
|                   |   | ISL28x17 C Grade   | <b>-1</b>       | <b>0.1</b>  | <b>1</b>        | $\mu V/^\circ C$ |
| I <sub>B</sub>    | Input Bias Current  |  | <b>-1</b>       | 0.18        | <b>1</b>        | nA               |
|                   |   |  | <b>-1.5</b>     |             | <b>1.5</b>      | nA               |
| TCI <sub>B</sub>  | Input Bias Current Temperature Coefficient                        |  | <b>-5</b>       | <b>1</b>    | <b>5</b>        | $pA/^\circ C$    |
| I <sub>OS</sub>   | Input Offset Current  |  | <b>-1.5</b>     | 0.3         | <b>1.5</b>      | nA               |
|                   |   |  | <b>-1.85</b>    |             | <b>1.85</b>     | nA               |
| TCI <sub>OS</sub> | Input Offset Current Temperature Coefficient                      |  | <b>-3</b>       | <b>0.42</b> | <b>3</b>        | $pA/^\circ C$    |
|                   |   | ISL28417 SOIC, TSSOP B and C Grade                                       | <b>-4.0</b>     | <b>0.45</b> | <b>4.0</b>      | $pA/^\circ C$    |
| V <sub>CM</sub>   | Input Voltage Range   |  | <b>-3</b>       |             | <b>3</b>        | V                |
| CMRR              | Common-Mode Rejection Ratio                                       | V <sub>CM</sub> = -3V to +3V   | 120             | 145         |                 | dB               |
|                   |   |  | <b>120</b>      |             |                 | dB               |
| PSRR              | Power Supply Rejection Ratio                                      | V <sub>S</sub> = $\pm 2.25V$ to $\pm 5V$                                 | 120             | 145         |                 | dB               |
|                   |   |  | <b>120</b>      |             |                 | dB               |
| A <sub>VOL</sub>  | Open-Loop Gain  | V <sub>O</sub> = -3.0V to +3.0V, R <sub>L</sub> = 10k $\Omega$ to ground | 130             | 143         |                 | dB               |
| V <sub>OH</sub>   | Output Voltage High   | R <sub>L</sub> = 10k $\Omega$ to ground                                  | 3.5             | 3.7         |                 | V                |
|                   |   |  | <b>3.2</b>      |             |                 | V                |
|                   |   | R <sub>L</sub> = 2k $\Omega$ to ground                                   | 3.3             | 3.55        |                 | V                |
|                   |   |  | <b>3.1</b>      |             |                 | V                |
| V <sub>OL</sub>   | Output Voltage Low  | R <sub>L</sub> = 10k $\Omega$ to ground                                  |                 | -3.7        | -3.5            | V                |
|                   |   |  |                 |             | <b>-3.2</b>     | V                |
|                   |   | R <sub>L</sub> = 2k $\Omega$ to ground                                   |                 | -3.55       | -3.3            | V                |
|                   |   |  |                 |             | <b>-3.1</b>     | V                |
| I <sub>S</sub>    | Supply Current/Amplifier  |  |                 | 0.44        | 0.53            | mA               |
|                   |   |  |                 |             | <b>0.68</b>     | mA               |
| I <sub>SC</sub>   | Short-Circuit   |  |                 | 43          |                 | mA               |

## AC SPECIFICATIONS

|                   |                        |   |  |      |  |                 |
|-------------------|------------------------|---|--|------|--|-----------------|
| GBWP              | Gain Bandwidth Product | A <sub>V</sub> = 1k, R <sub>L</sub> = 2k $\Omega$ |  | 1.5  |  | MHz             |
| e <sub>np-p</sub> | Voltage Noise          | 0.1Hz to 10Hz                                     |  | 0.25 |  | $\mu V_{p-p}$   |
| e <sub>n</sub>    | Voltage Noise Density  | f = 10Hz  |  | 12   |  | nV/ $\sqrt{Hz}$ |
| e <sub>n</sub>    | Voltage Noise Density  | f = 100Hz   |  | 8.6  |  | nV/ $\sqrt{Hz}$ |
| e <sub>n</sub>    | Voltage Noise Density  | f = 1kHz  |  | 8    |  | nV/ $\sqrt{Hz}$ |

# ISL28117, ISL28217, ISL28417

**Electrical Specifications**  $V_S \pm 5V$ ,  $V_{CM} = 0$ ,  $V_O = 0V$ ,  $T_A = +25^\circ C$ , unless otherwise noted. **Boldface limits apply over the operating temperature range,  $-40^\circ C$  to  $+125^\circ C$ .** (Continued)

| PARAMETER                    | DESCRIPTION   | CONDITIONS   | MIN<br>(Note 8) | TYP | MAX<br>(Note 8) | UNIT           |
|------------------------------|---|--|-----------------|-----|-----------------|----------------|
| $e_n$                        | Voltage Noise Density                               | $f = 10kHz$  |                 | 8   |                 | $nV/\sqrt{Hz}$ |
| $i_n$                        | Current Noise Density                               | $f = 1kHz$   |                 | 0.1 |                 | $pA/\sqrt{Hz}$ |
| <b>TRANSIENT RESPONSE</b>    |   |  |                 |     |                 |                |
| SR                           | Slew Rate, $V_{OUT}$ 20% to 80%                     | $A_V = 11$ , $R_L = 2k\Omega$ , $V_O = 4V_{P-P}$                     |                 | 0.5 |                 | $V/\mu s$      |
| $t_r$ , $t_f$ , Small Signal | Rise Time<br>10% to 90% of $V_{OUT}$                | $A_V = 1$ , $V_{OUT} = 50mV_{P-P}$<br>$R_L = 10k\Omega$ to $V_{CM}$  |                 | 130 |                 | ns             |
|                              | Fall Time<br>90% to 10% of $V_{OUT}$                | $A_V = 1$ , $V_{OUT} = 50mV_{P-P}$<br>$R_L = 10k\Omega$ to $V_{CM}$  |                 | 130 |                 | ns             |
| $t_s$                        | Settling Time to 0.1%<br>4V Step; 10% to $V_{OUT}$  | $A_V = -1$ , $V_{OUT} = 4V_{P-P}$<br>$R_L = 5k\Omega$ to $V_{CM}$    |                 | 12  |                 | $\mu s$        |
|                              | Settling Time to 0.01%<br>4V Step; 10% to $V_{OUT}$ | $A_V = -1$ , $V_{OUT} = 4V_{P-P}$<br>$R_L = 5k\Omega$ to $V_{CM}$    |                 | 19  |                 | $\mu s$        |
| $t_{OL}$                     | Output Positive Overload Recovery Time              | $A_V = -100$ , $V_{IN} = 0.2V_{P-P}$<br>$R_L = 2k\Omega$ to $V_{CM}$ |                 | 7   |                 | $\mu s$        |
|                              | Output Negative Overload Recovery Time              | $A_V = -100$ , $V_{IN} = 0.2V_{P-P}$<br>$R_L = 2k\Omega$ to $V_{CM}$ |                 | 5.8 |                 | $\mu s$        |

NOTE:

8. Compliance to datasheet limits is assured by one or more methods: production test, characterization and/or design.

## Typical Performance Curves $V_S = \pm 15V$ , $V_{CM} = 0V$ , $R_L = \text{Open}$ , unless otherwise specified.

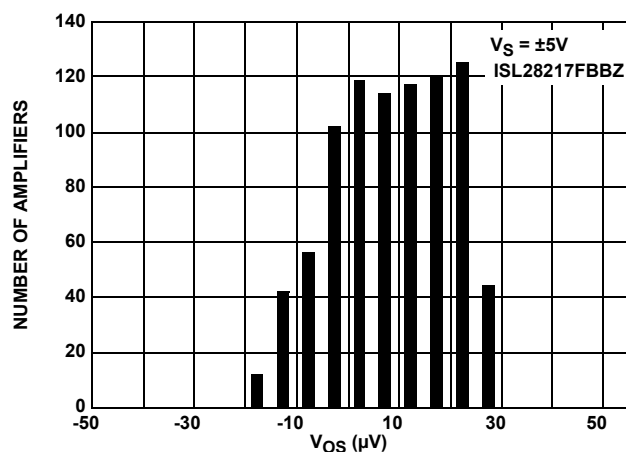


FIGURE 3.  $V_{OS}$  DISTRIBUTION FOR GRADE B

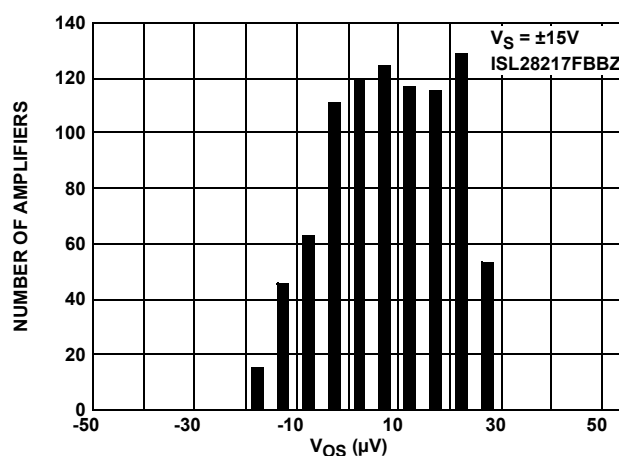


FIGURE 4.  $V_{OS}$  DISTRIBUTION FOR GRADE B

## Typical Performance Curves $V_S = \pm 15V$ , $V_{CM} = 0V$ , $R_L = \text{Open}$ , unless otherwise specified. (Continued)

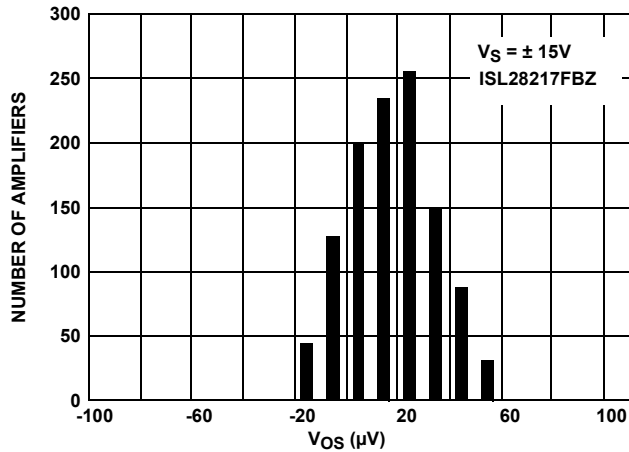


FIGURE 5.  $V_{OS}$  DISTRIBUTION FOR GRADE C

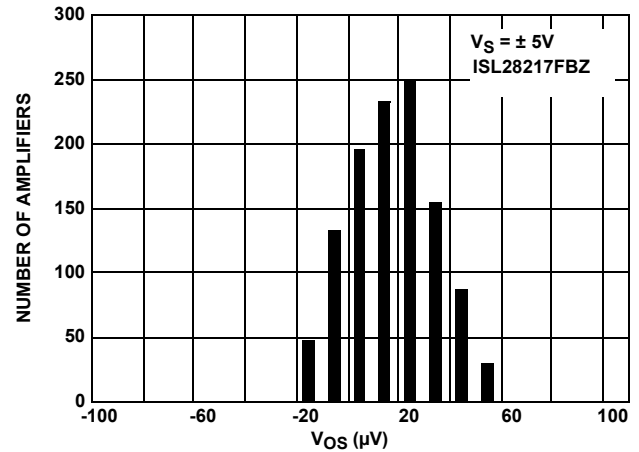


FIGURE 6.  $V_{OS}$  DISTRIBUTION FOR GRADE C

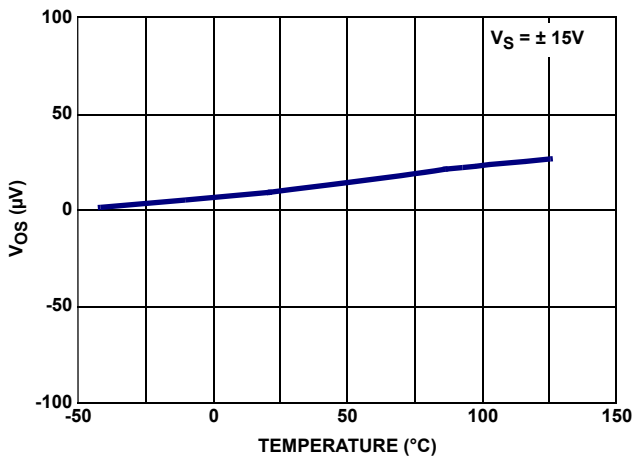


FIGURE 7.  $V_{OS}$  RANGE vs TEMPERATURE

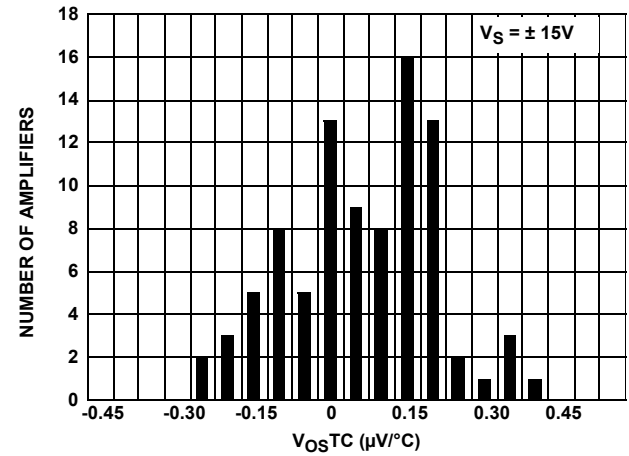


FIGURE 8.  $TCV_{OS}$  vs NUMBER OF AMPLIFIERS

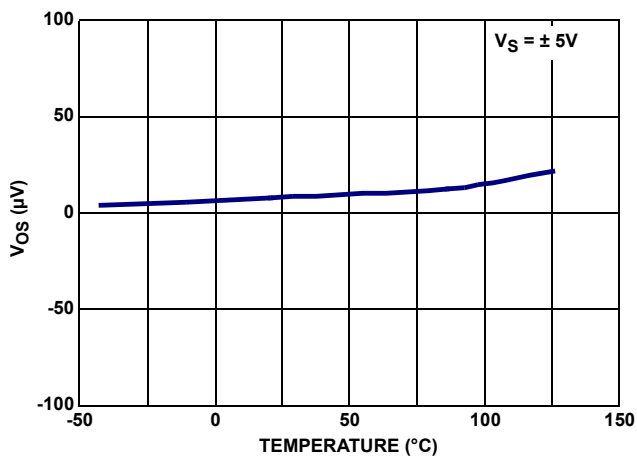


FIGURE 9.  $V_{OS}$  RANGE vs TEMPERATURE

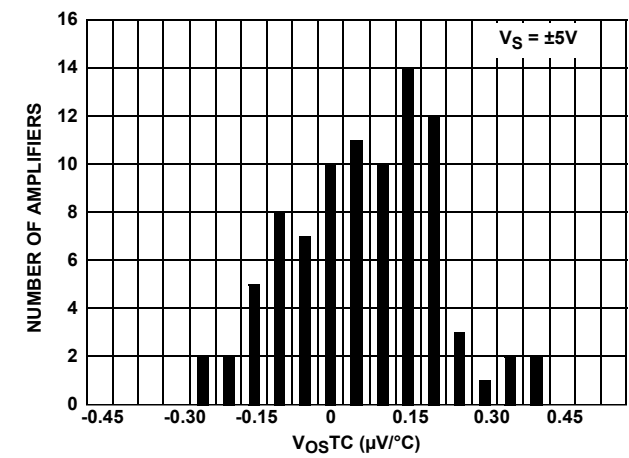


FIGURE 10.  $TCV_{OS}$  vs NUMBER OF AMPLIFIERS

## Typical Performance Curves $V_S = \pm 15V$ , $V_{CM} = 0V$ , $R_L = \text{Open}$ , unless otherwise specified. (Continued)

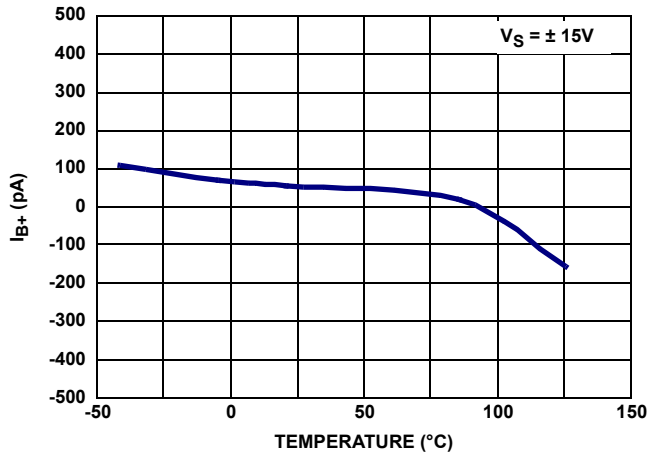


FIGURE 11.  $I_{B+}$  RANGE vs TEMPERATURE

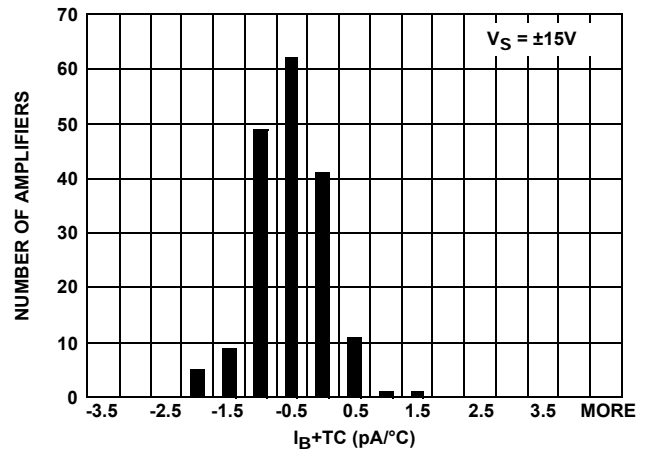


FIGURE 12.  $TCI_{B+}$  vs NUMBER OF AMPLIFIERS

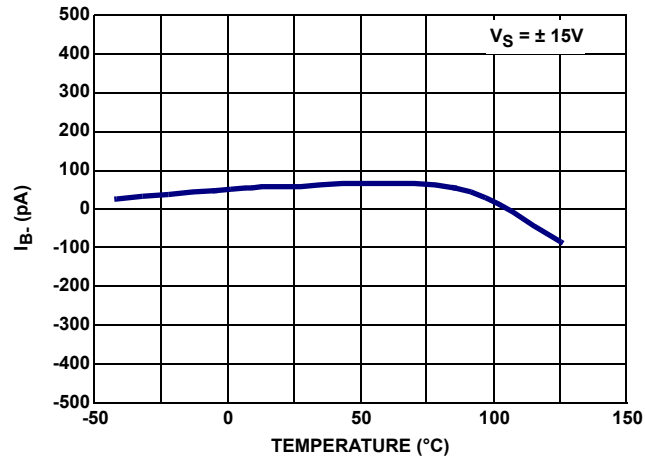


FIGURE 13.  $I_{B-}$  RANGE vs TEMPERATURE

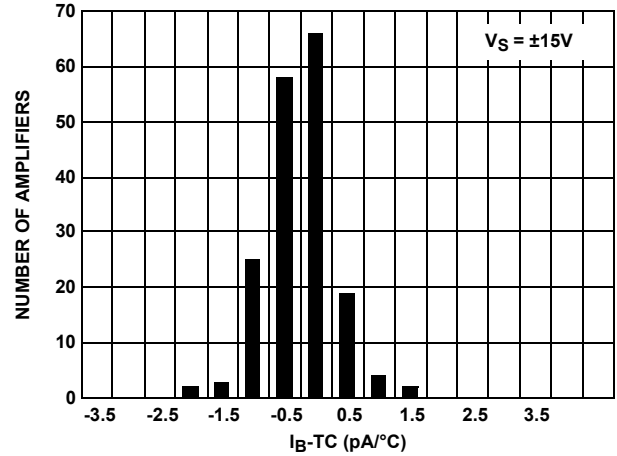


FIGURE 14.  $TCI_{B-}$  vs NUMBER OF AMPLIFIERS

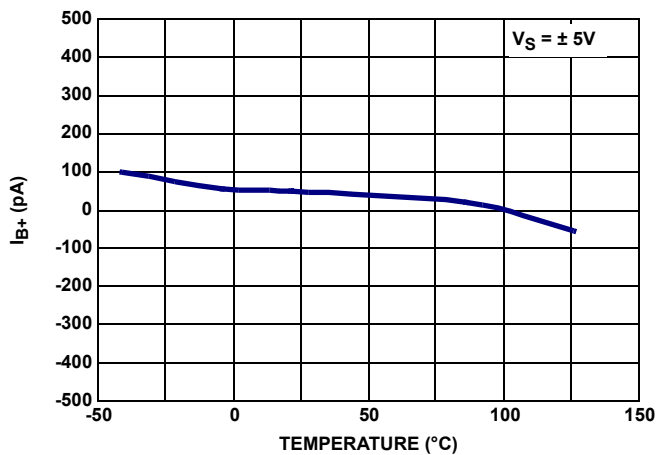


FIGURE 15.  $I_{B+}$  RANGE vs TEMPERATURE

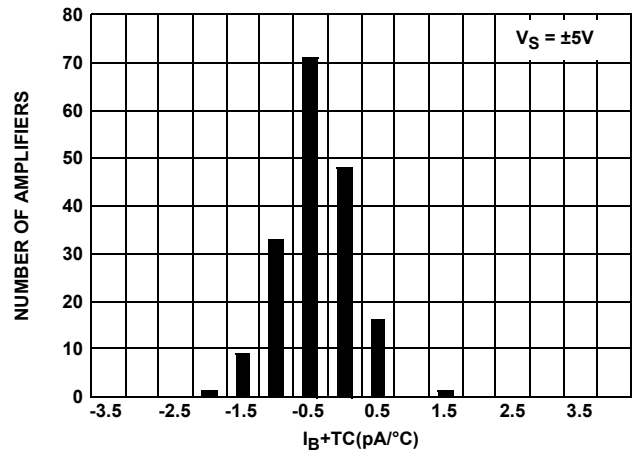


FIGURE 16.  $TCI_{B+}$  vs NUMBER OF AMPLIFIERS

## Typical Performance Curves $V_S = \pm 15V$ , $V_{CM} = 0V$ , $R_L = \text{Open}$ , unless otherwise specified. (Continued)

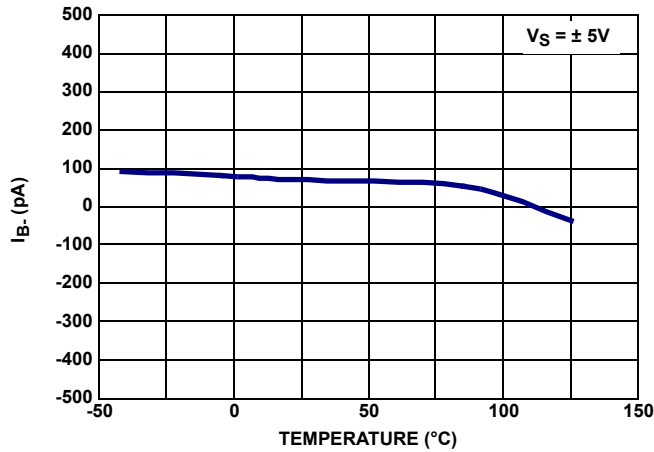


FIGURE 17.  $I_{B-}$  RANGE vs TEMPERATURE

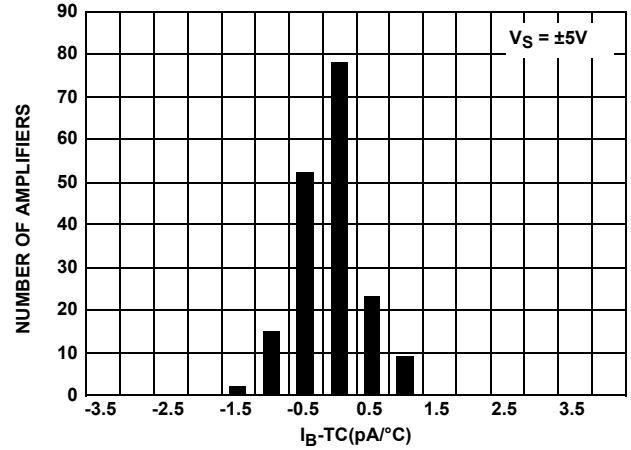


FIGURE 18.  $TCI_{B-}$  vs NUMBER OF AMPLIFIERS

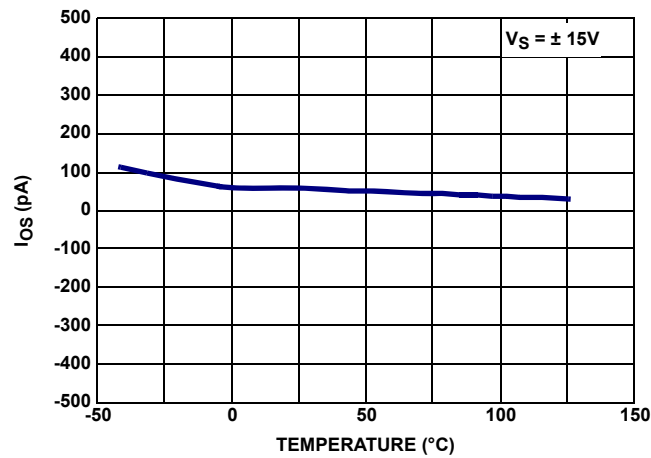


FIGURE 19.  $I_{OS}$  RANGE vs TEMPERATURE

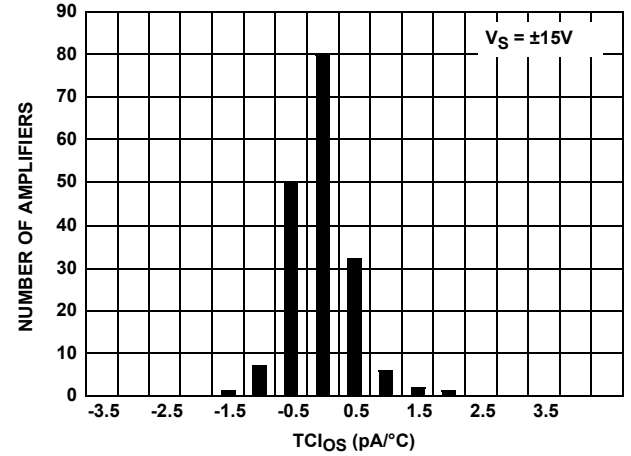


FIGURE 20.  $I_{OS}TC$  vs NUMBER OF AMPLIFIERS

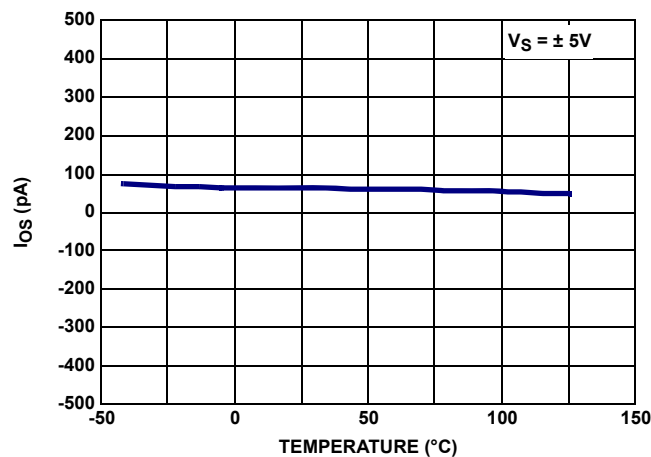


FIGURE 21.  $I_{OS}$  RANGE vs TEMPERATURE

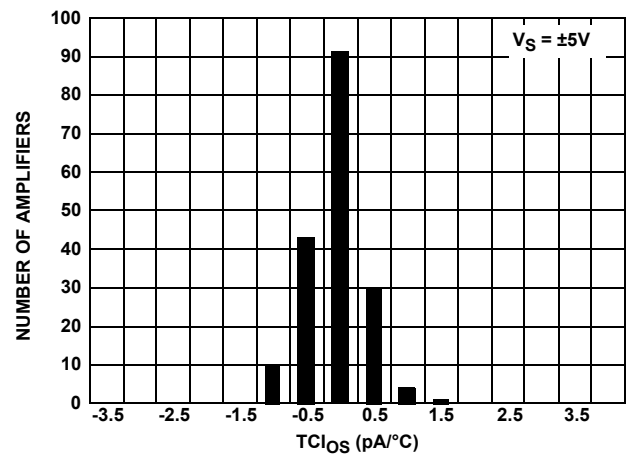


FIGURE 22.  $I_{OS}TC$  vs NUMBER OF AMPLIFIERS

## Typical Performance Curves $V_S = \pm 15V$ , $V_{CM} = 0V$ , $R_L = \text{Open}$ , unless otherwise specified. (Continued)

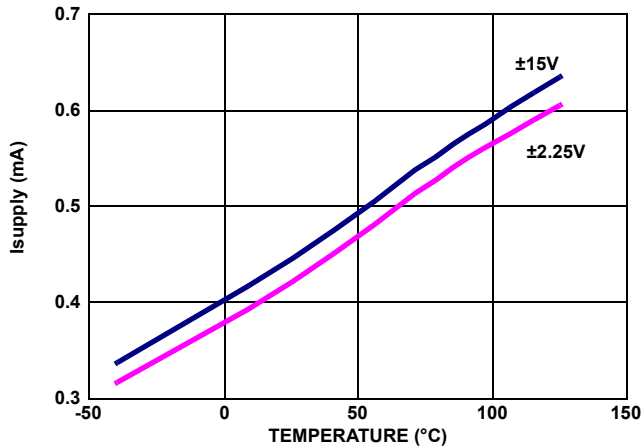


FIGURE 23. SUPPLY CURRENT PER AMP vs TEMPERATURE

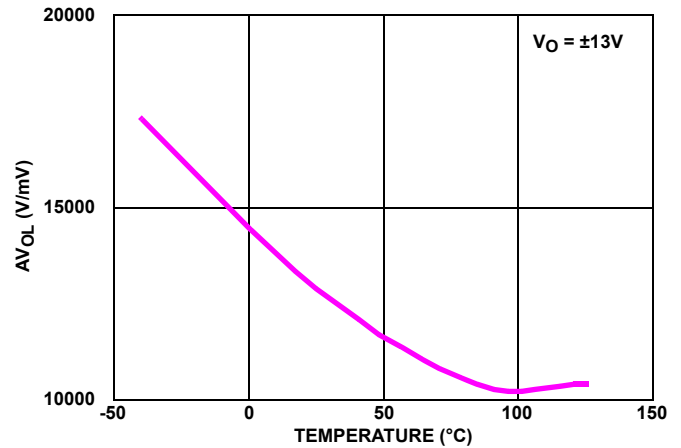


FIGURE 24.  $AV_{OL}$  vs TEMPERATURE

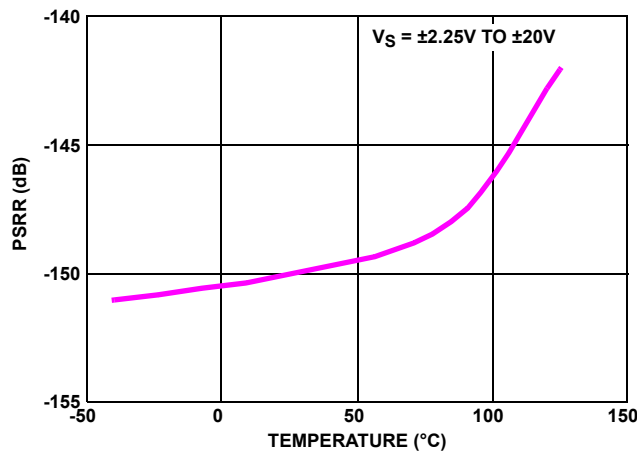


FIGURE 25. PSRR vs TEMPERATURE

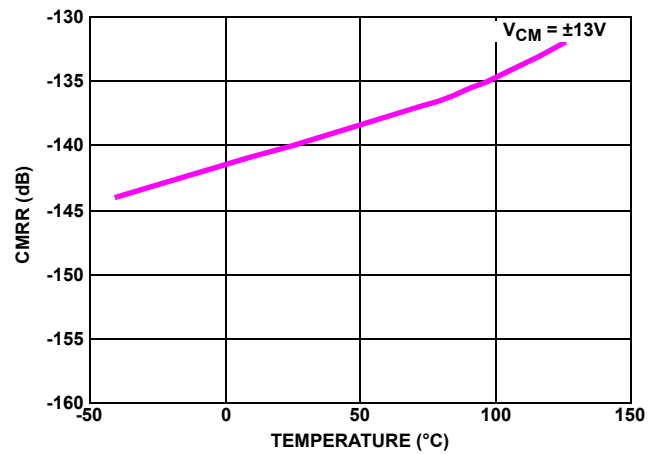


FIGURE 26. CMRR vs TEMPERATURE

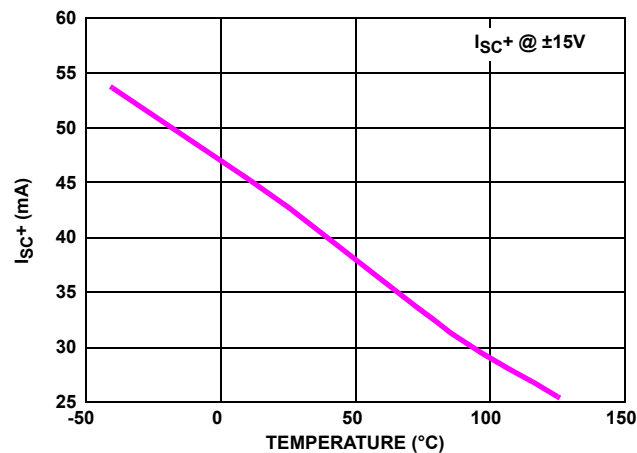


FIGURE 27. POSITIVE SHORT CIRCUIT CURRENT vs TEMPERATURE

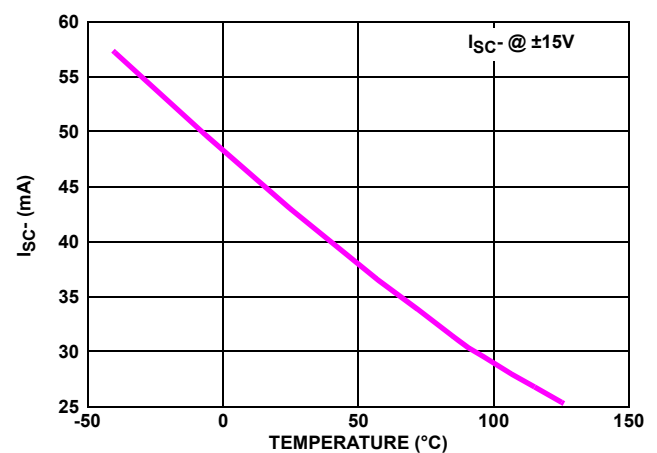


FIGURE 28. NEGATIVE SHORT CIRCUIT CURRENT vs TEMPERATURE

## Typical Performance Curves $V_S = \pm 15V$ , $V_{CM} = 0V$ , $R_L = \text{Open}$ , unless otherwise specified. (Continued)

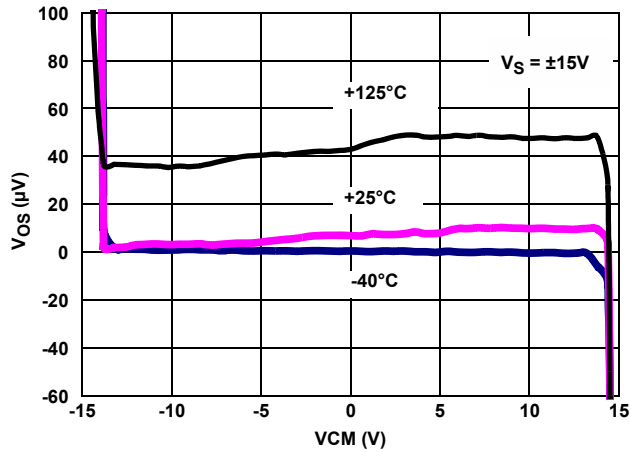


FIGURE 29. INPUT  $V_{OS}$  vs INPUT COMMON MODE VOLTAGE,  $V_S = \pm 15V$

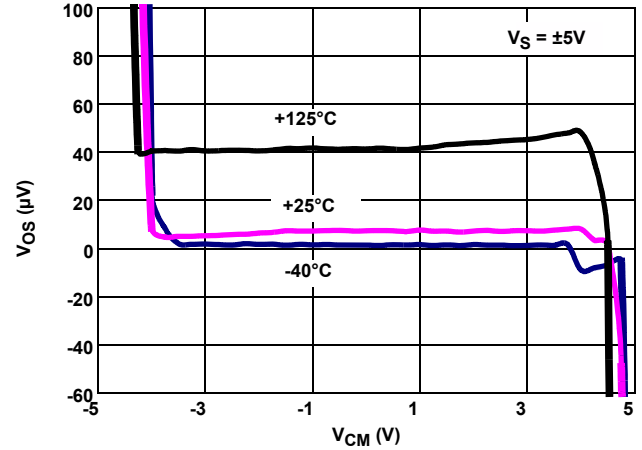


FIGURE 30. INPUT  $V_{OS}$  vs INPUT COMMON MODE VOLTAGE,  $V_S = \pm 5V$

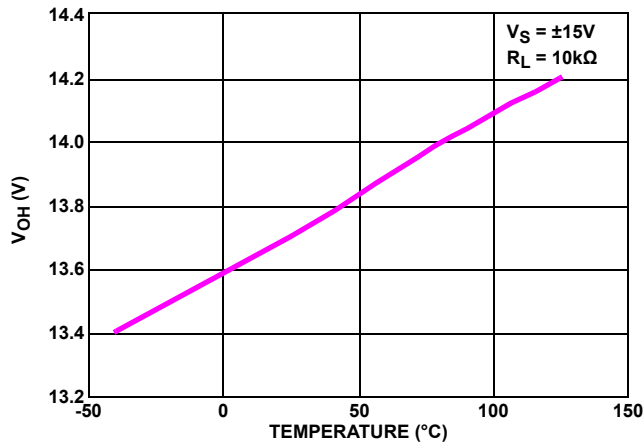


FIGURE 31.  $V_{OH}$  vs TEMPERATURE

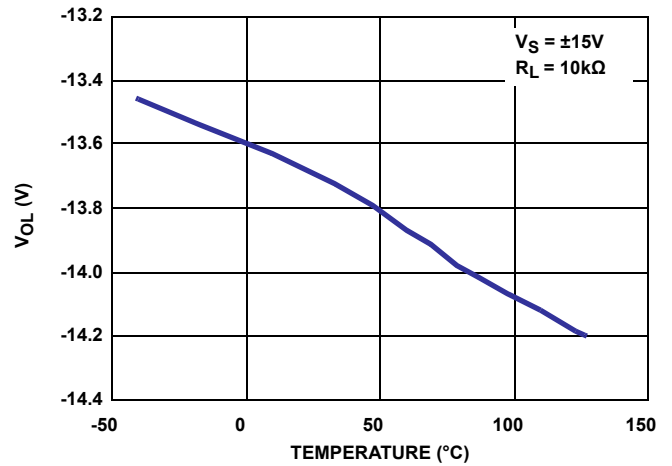


FIGURE 32.  $V_{OL}$  vs TEMPERATURE,

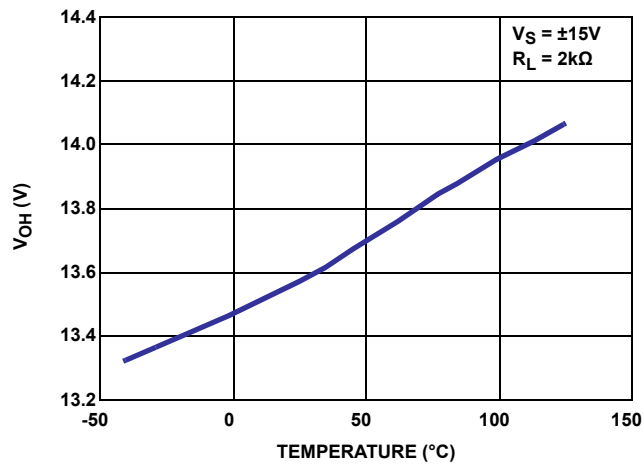


FIGURE 33.  $V_{OH}$  vs TEMPERATURE

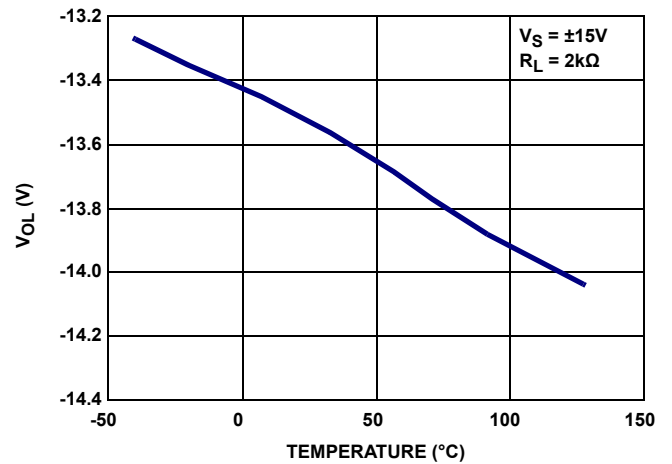


FIGURE 34.  $V_{OL}$  vs TEMPERATURE

## Typical Performance Curves $V_S = \pm 15V$ , $V_{CM} = 0V$ , $R_L = \text{Open}$ , unless otherwise specified. (Continued)

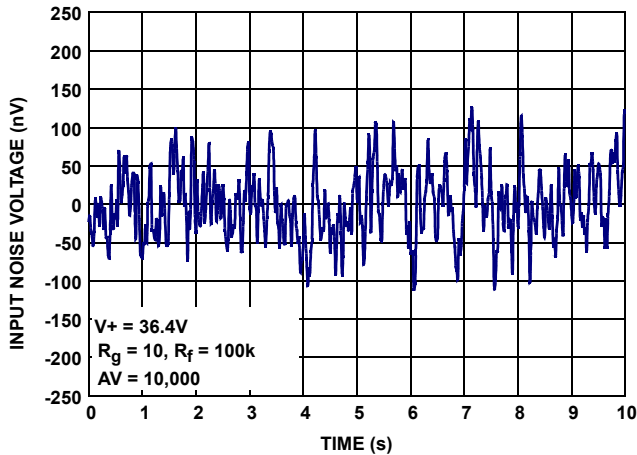


FIGURE 35. INPUT NOISE VOLTAGE 0.1Hz to 10Hz

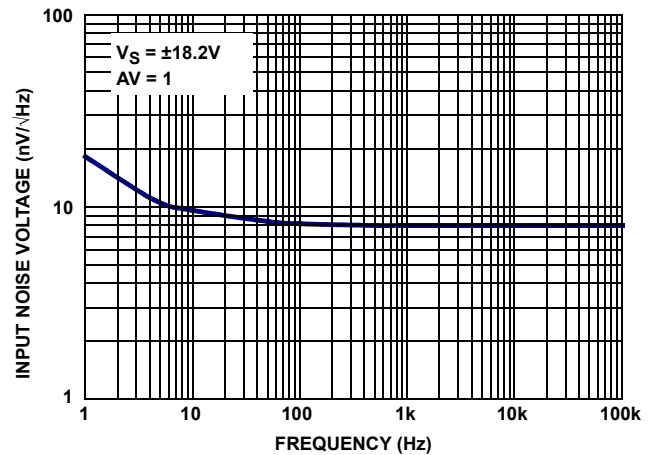


FIGURE 36. INPUT NOISE VOLTAGE SPECTRAL DENSITY

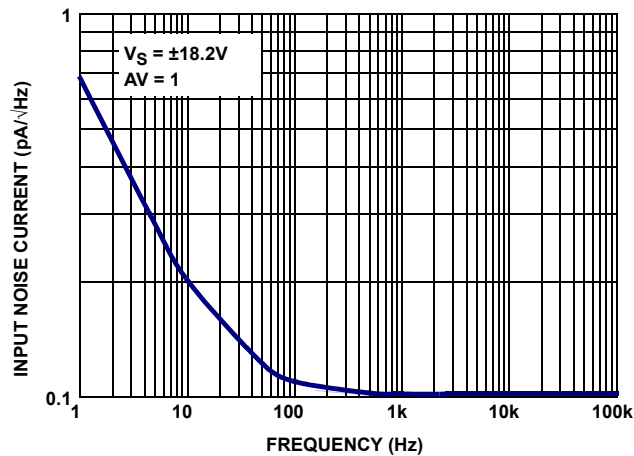


FIGURE 37. INPUT NOISE CURRENT SPECTRAL DENSITY

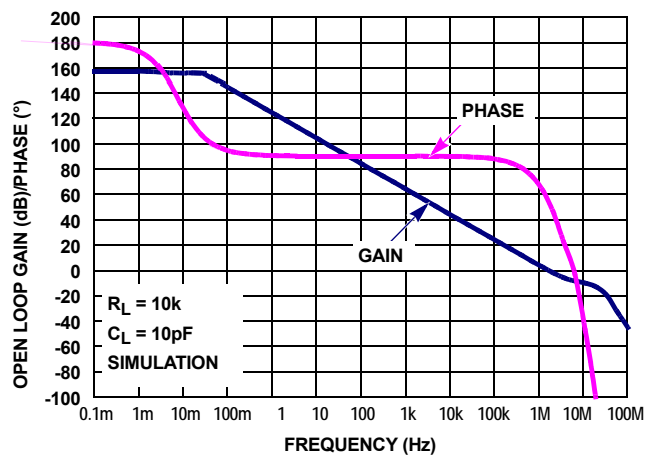


FIGURE 38. OPEN-LOOP GAIN, PHASE vs FREQUENCY,  $R_L = 10k\Omega$ ,  $C_L = 10pF$

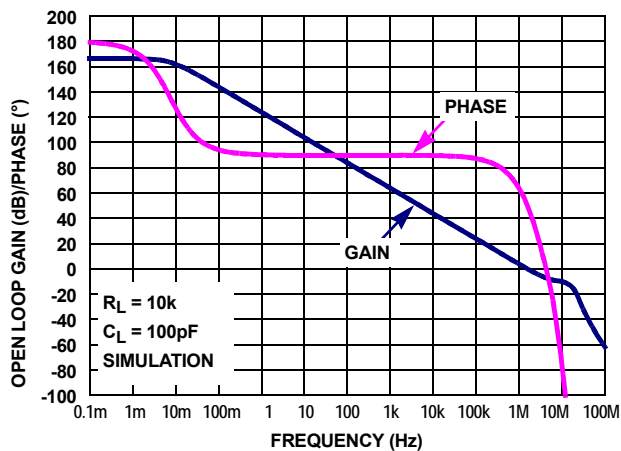


FIGURE 39. OPEN-LOOP GAIN, PHASE vs FREQUENCY,  $R_L = 10k\Omega$ ,  $C_L = 100pF$

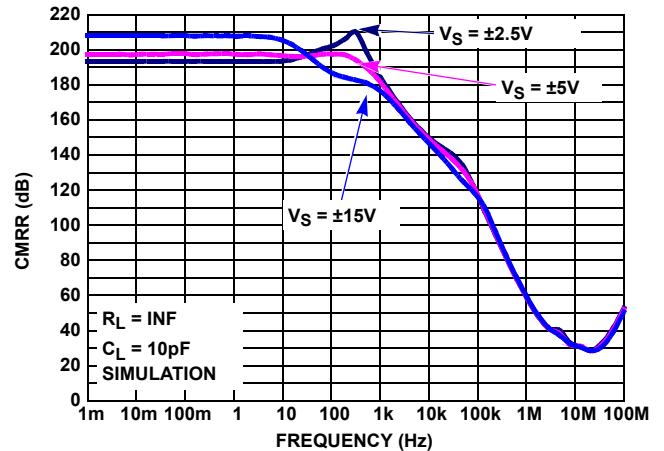


FIGURE 40. CMRR vs FREQUENCY,  $V_S = \pm 2.25, \pm 5V, \pm 15V$



## Typical Performance Curves

$V_S = \pm 15V$ ,  $V_{CM} = 0V$ ,  $R_L = \text{Open}$ , unless otherwise specified. (Continued)

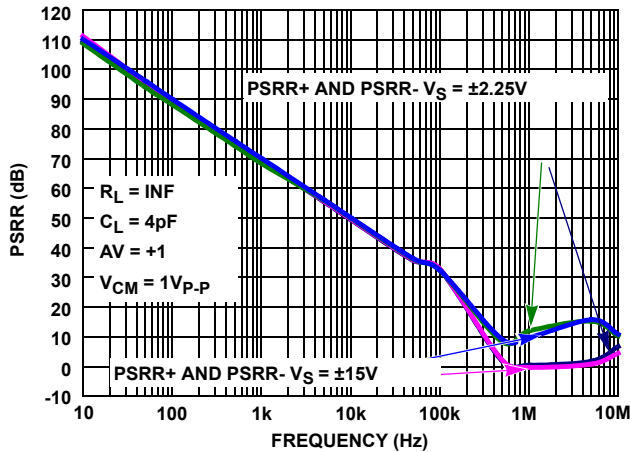


FIGURE 41. PSRR vs FREQUENCY,  $V_S = \pm 5V$ ,  $\pm 15V$

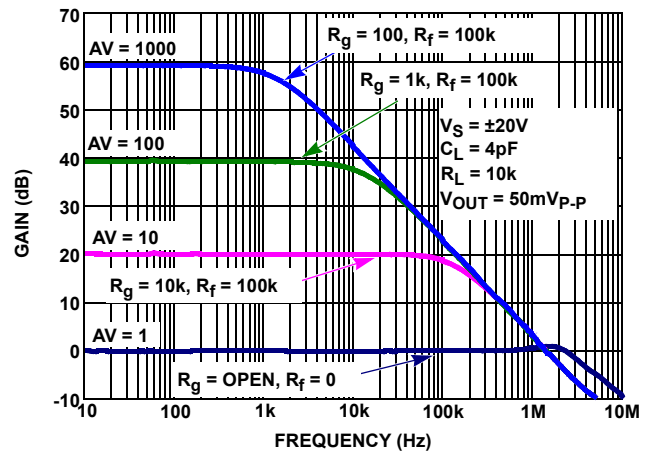


FIGURE 42. FREQUENCY RESPONSE vs CLOSED LOOP GAIN

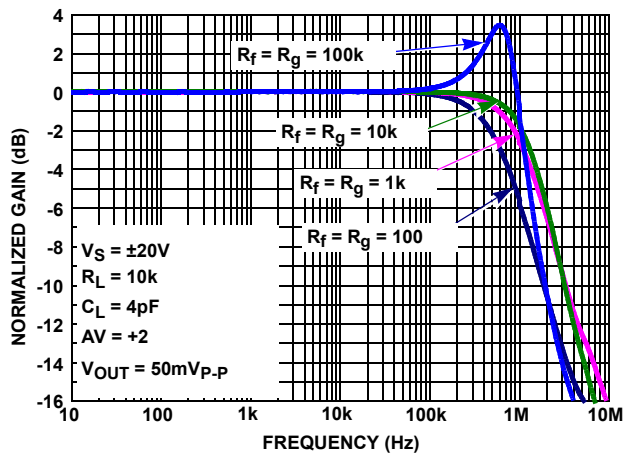


FIGURE 43. FREQUENCY RESPONSE vs FEEDBACK RESISTANCE  
 $R_f/R_g$

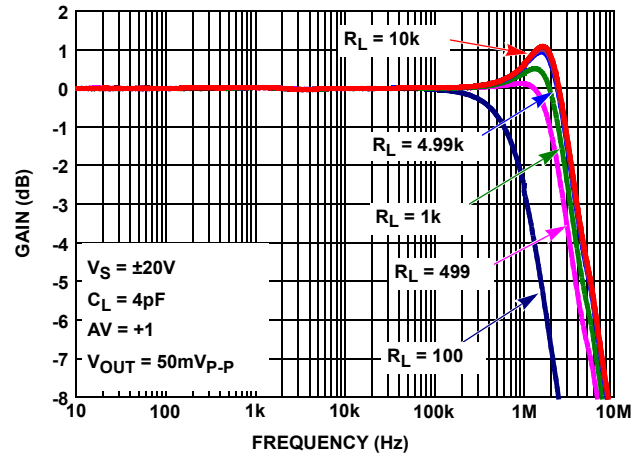


FIGURE 44. GAIN vs FREQUENCY vs  $R_L$

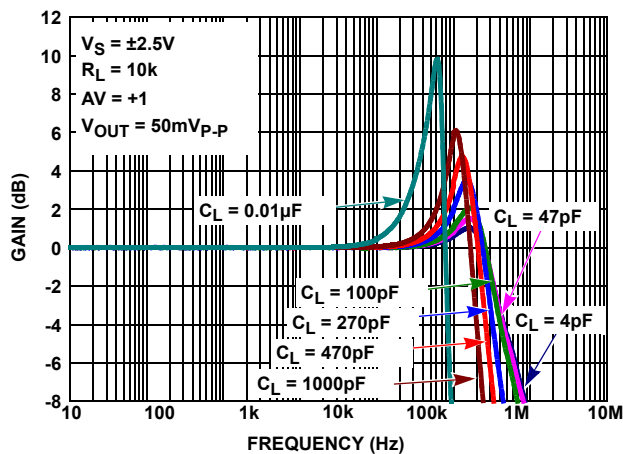


FIGURE 45. GAIN vs FREQUENCY vs  $C_L$

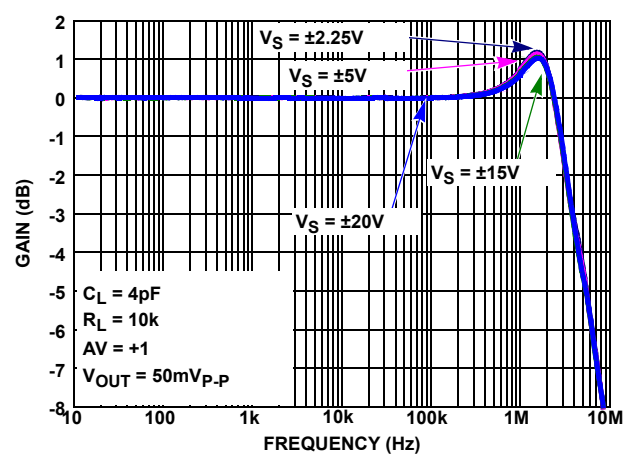


FIGURE 46. GAIN vs FREQUENCY vs SUPPLY VOLTAGE

# Typical Performance Curves

$V_S = \pm 15V$ ,  $V_{CM} = 0V$ ,  $R_L = \text{Open}$ , unless otherwise specified. (Continued)

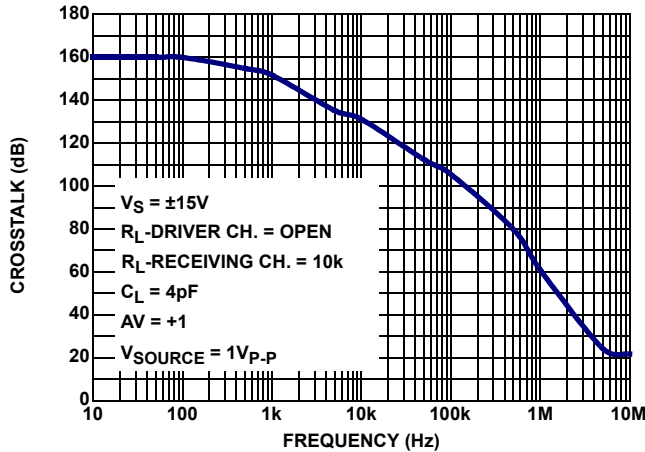


FIGURE 47. CROSSTALK,  $V_S = \pm 15V$

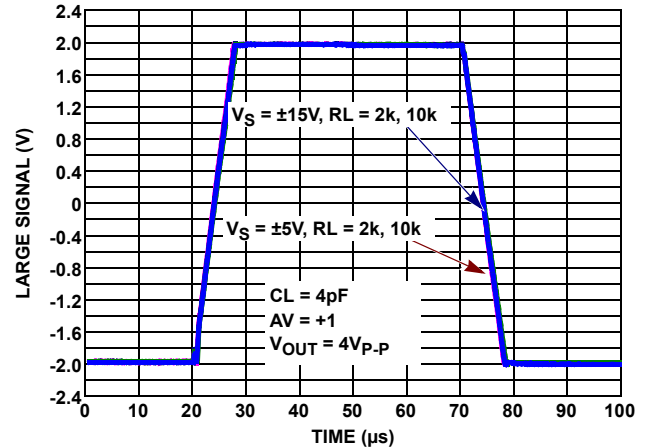


FIGURE 48. LARGE SIGNAL TRANSIENT RESPONSE vs  $R_L$ ,  $V_S = \pm 5V$ ,  $\pm 15V$

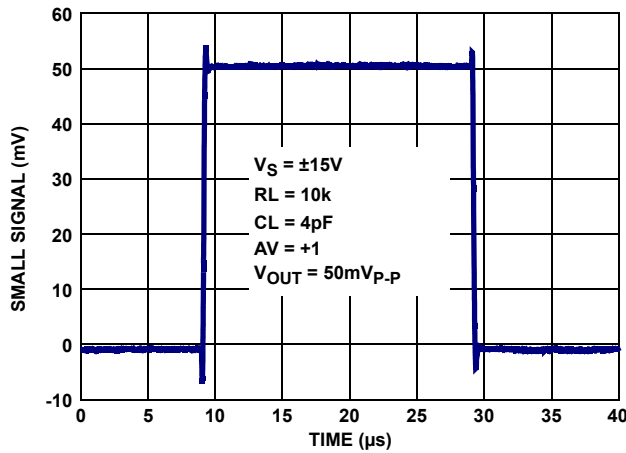


FIGURE 49. SMALL SIGNAL TRANSIENT RESPONSE,  $V_S = \pm 5V$ ,  $\pm 15V$

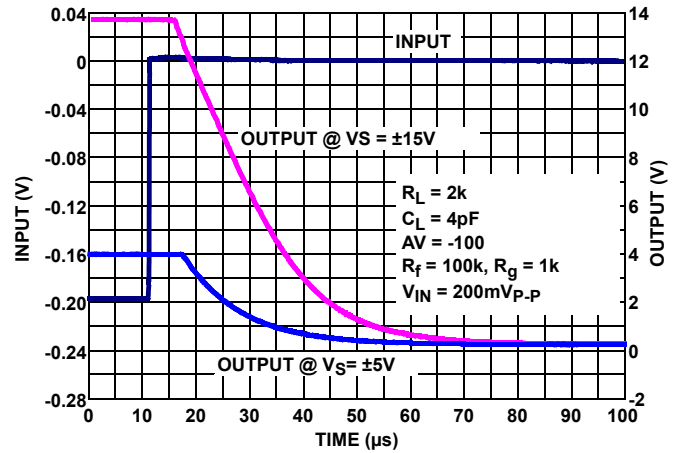


FIGURE 50. POSITIVE OUTPUT OVERLOAD RESPONSE TIME,  $V_S = \pm 5V$ ,  $\pm 15V$

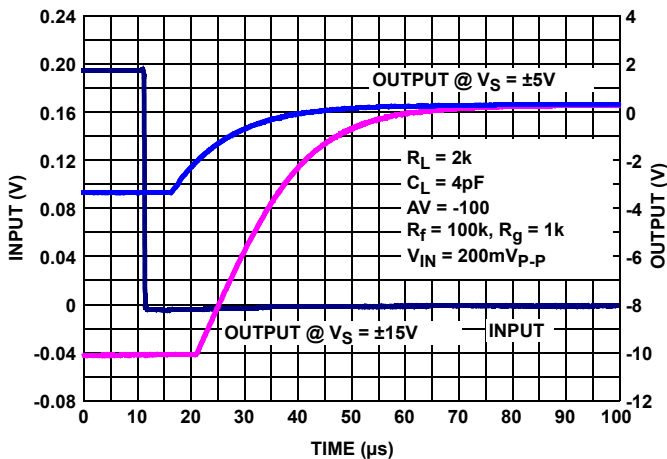


FIGURE 51. NEGATIVE OUTPUT OVERLOAD RESPONSE TIME,  $V_S = \pm 5V$ ,  $\pm 15V$

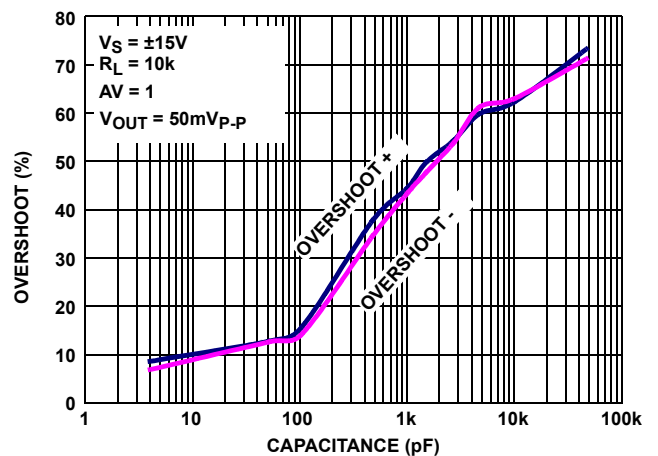


FIGURE 52. % OVERSHOOT vs LOAD CAPACITANCE,  $V_S = \pm 15V$

## Typical Performance Curves $V_S = \pm 15V$ , $V_{CM} = 0V$ , $R_L = \text{Open}$ , unless otherwise specified. (Continued)

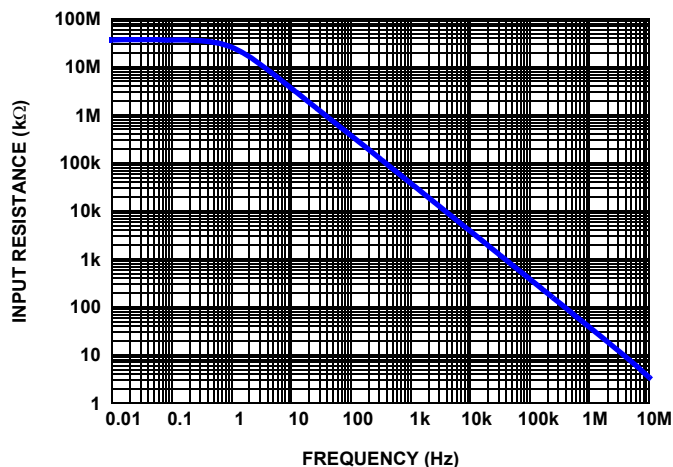


FIGURE 53. COMMON MODE INPUT IMPEDANCE

## Applications Information

### Functional Description

The ISL28117, ISL28217 and ISL28417 are single, dual and quad, low noise precision op amps. Both devices are fabricated in a new precision 40V complementary bipolar DI process. A super-beta NPN input stage with input bias current cancellation provides low input bias current (180pA typical), low input offset voltage (13μV typical), low input noise voltage (8nV/√Hz), and low 1/f noise corner frequency (~8Hz). These amplifiers also feature high open loop gain (18kV/mV) for excellent CMRR (145dB) and THD+N performance (0.0005% @ 3.5V<sub>RMS</sub>, 1kHz into 2kΩ). A complimentary bipolar output stage enables high capacitive load drive without external compensation.

### Operating Voltage Range

The devices are designed to operate over the 4.5V (±2.25V) to 40V (±20V) range and are fully characterized at 10V (±5V) and 30V (±15V). The Power Supply Rejection Ratio typically exceeds 140dB over the full operating voltage range and 120dB minimum over the -40°C to +125°C temperature range. The worst case common mode input voltage range over temperature is 2V to each rail. With ±15V supplies, CMRR performance is typically >130dB over-temperature. The minimum CMRR performance over the -40°C to +125°C temperature range is >120dB for power supply voltages from ±5V (10V) to ±15V (30V).

### Input Performance

The super-beta NPN input pair provides excellent frequency response while maintaining high input precision. High NPN beta (>1000) reduces input bias current while maintaining good frequency response, low input bias current and low noise. Input bias cancellation circuits provide additional bias current reduction to <1nA, and excellent temperature stabilization. Figures 11 through 18 show the high degree of bias current stability at ±5V and ±15V supplies that is maintained across the -40°C to +125°C temperature range. The low bias current TC

also produces very low input offset current TC, which reduces DC input offset errors in precision, high impedance amplifiers.

The +25°C maximum input offset voltage ( $V_{OS}$ ) for the “B” grade is 50μV and 100μV for the “C” grade. Input offset voltage temperature coefficients ( $V_{OS}TC$ ) are a maximum of ±0.6μV/°C for the “B” and ±0.9μV/°C for the “C” grade. Figures 3 through 6 show the typical gaussian-like distribution over the ±5V to ±15V supply range and over the full temperature range. The  $V_{OS}$  temperature behavior is smooth (Figures 7 through 10) maintaining constant TC across the entire temperature range.

### Input ESD Diode Protection

The input terminals (IN+ and IN-) have internal ESD protection diodes to the positive and negative supply rails, series connected 500Ω current limiting resistors and an anti-parallel diode pair across the inputs (Figure 54).

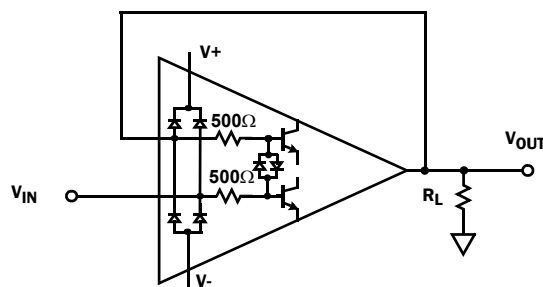


FIGURE 54. INPUT ESD DIODE CURRENT LIMITING- UNITY GAIN

The series resistors limit the high feed-through currents that can occur in pulse applications when the input  $dV/dt$  exceeds the 0.5V/μs slew rate of the amplifier. Without the series resistors, the input can forward-bias the anti-parallel diodes causing current to flow to the output resulting in severe distortion and possible diode failure. Figure 48 provides an example of distortion free large signal response using a 4V<sub>P-P</sub> input pulse with an input rise time of <1ns. The series resistors enable the input differential voltage to be equal to the maximum power supply voltage (40V) without damage.

In applications where one or both amplifier input terminals are at risk of exposure to high voltages beyond the power supply rails, current limiting resistors may be needed at the input terminal to limit the current through the power supply ESD diodes to 20mA max.

## Output Current Limiting

The output current is internally limited to approximately  $\pm 45\text{mA}$  at  $+25^\circ\text{C}$  and can withstand a short circuit to either rail as long as the power dissipation limits are not exceeded. This applies to only 1 amplifier at a time for the dual op amp. Continuous operation under these conditions may degrade long term reliability. Figures 27 and 28 show the current limit variation with temperature.

## Output Phase Reversal

Output phase reversal is a change of polarity in the amplifier transfer function when the input voltage exceeds the supply voltage. The ISL28117, ISL28217 and ISL28417 are immune to output phase reversal, even when the input voltage is 1V beyond the supplies.

## Unused Channels

The ISL28217 is a dual op-amp. If the application only requires one channel, the user must configure the unused channel to prevent it from oscillating. The unused channel oscillates if the input and output pins are floating. This results in higher than expected supply currents and possible noise injection into the channel being used. The proper way to prevent this oscillation is to short the output to the inverting input and ground the positive input, as shown in Figure 55.

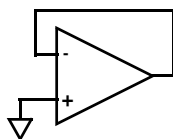


FIGURE 55. PREVENTING OSCILLATIONS IN UNUSED CHANNELS

## Power Dissipation

It is possible to exceed the  $+150^\circ\text{C}$  maximum junction temperatures under certain load and power supply conditions. It is therefore important to calculate the maximum junction temperature ( $T_{JMAX}$ ) for all applications to determine if power

supply voltages, load conditions, or package type need to be modified to remain in the safe operating area. These parameters are related using Equation 1:

$$T_{JMAX} = T_{MAX} + \theta_{JA} \times PD_{MAXTOTAL} \quad (\text{EQ. 1})$$

where:

- $PD_{MAXTOTAL}$  is the sum of the maximum power dissipation of each amplifier in the package ( $PD_{MAX}$ )
- $PD_{MAX}$  for each amplifier can be calculated using Equation 2:

$$PD_{MAX} = V_S \times I_{qMAX} + (V_S - V_{OUTMAX}) \times \frac{V_{OUTMAX}}{R_L} \quad (\text{EQ. 2})$$

where:

- $T_{MAX}$  = Maximum ambient temperature
- $\theta_{JA}$  = Thermal resistance of the package
- $PD_{MAX}$  = Maximum power dissipation of 1 amplifier
- $V_S$  = Total supply voltage
- $I_{qMAX}$  = Maximum quiescent supply current of 1 amplifier
- $V_{OUTMAX}$  = Maximum output voltage swing of the application

## ISL28117, ISL28217 and ISL28417 SPICE Model

Figure 56 shows the SPICE model schematic and Figure 57 shows the net list for the ISL28117, ISL28217 and ISL28417 SPICE model for a Grade "B" part. The model is a simplified version of the actual device and simulates important AC and DC parameters. AC parameters incorporated into the model are:  $1/f$  and flatband noise, Slew Rate, CMRR, Gain and Phase. The DC parameters are VOS, IOS, total supply current and output voltage swing. The model uses typical parameters given in the "Electrical Specifications" Table beginning on page 6. The AVOL is adjusted for 155dB with the dominate pole at 0.02Hz. The CMRR is set (210dB,  $f_{cm} = 10\text{Hz}$ ). The input stage models the actual device to present an accurate AC representation. The model is configured for ambient temperature of  $+25^\circ\text{C}$ .

Figures 58 through 68 show the characterization vs simulation results for the Noise Voltage, Closed Loop Gain vs Frequency, Closed Loop Gain vs  $R_L$ , Large Signal Step Response, Open Loop Gain Phase and Simulated CMRR vs Frequency.

## License Statement

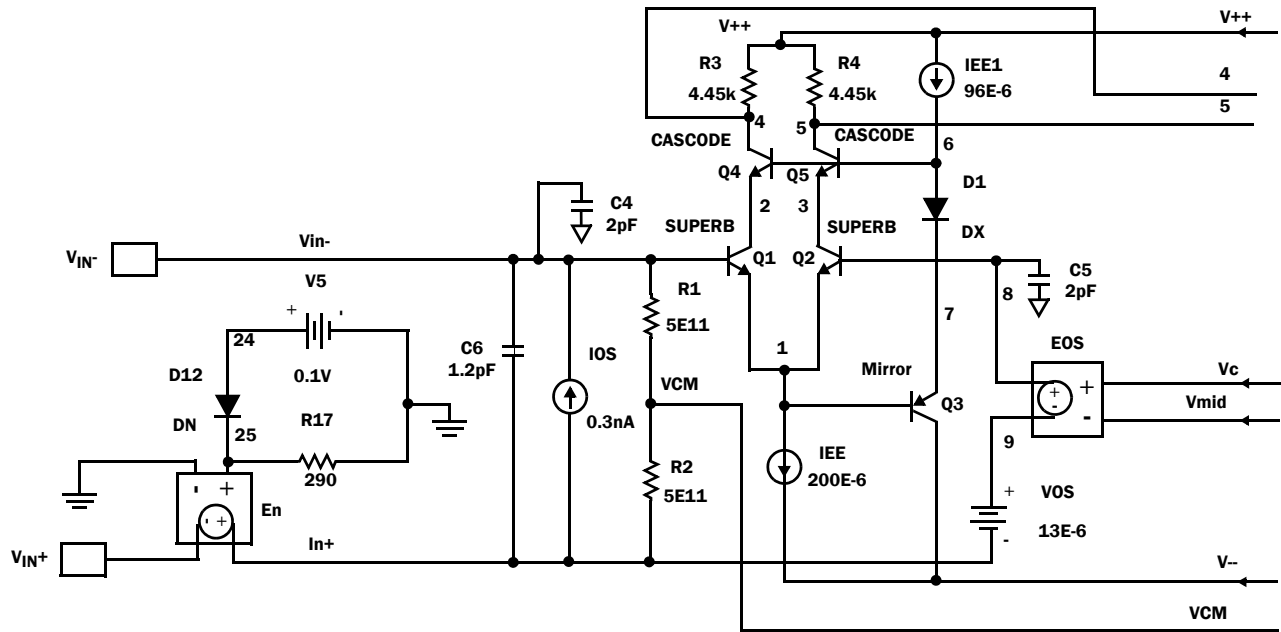
The information in this SPICE model is protected under the United States copyright laws. Intersil Corporation hereby grants users of this macro-model hereto referred to as "Licensee", a nonexclusive, nontransferable licence to use this model as long as the Licensee abides by the terms of this agreement. Before using this macro-model, the Licensee should read this license. If the Licensee does not accept these terms, permission to use the model is not granted.

The Licensee may not sell, loan, rent, or license the macro-model, in whole, in part, or in modified form, to anyone outside the Licensee's company. The Licensee may modify the macro-model to suit his/her specific applications, and the Licensee may make copies of this macro-model for use within their company only.

This macro-model is provided "AS IS, WHERE IS, AND WITH NO WARRANTY OF ANY KIND EITHER EXPRESSED OR IMPLIED, INCLUDING BUY NOT LIMITED TO ANY IMPLIED WARRANTIES OF MERCHANTABILITY AND FITNESS FOR A PARTICULAR PURPOSE."

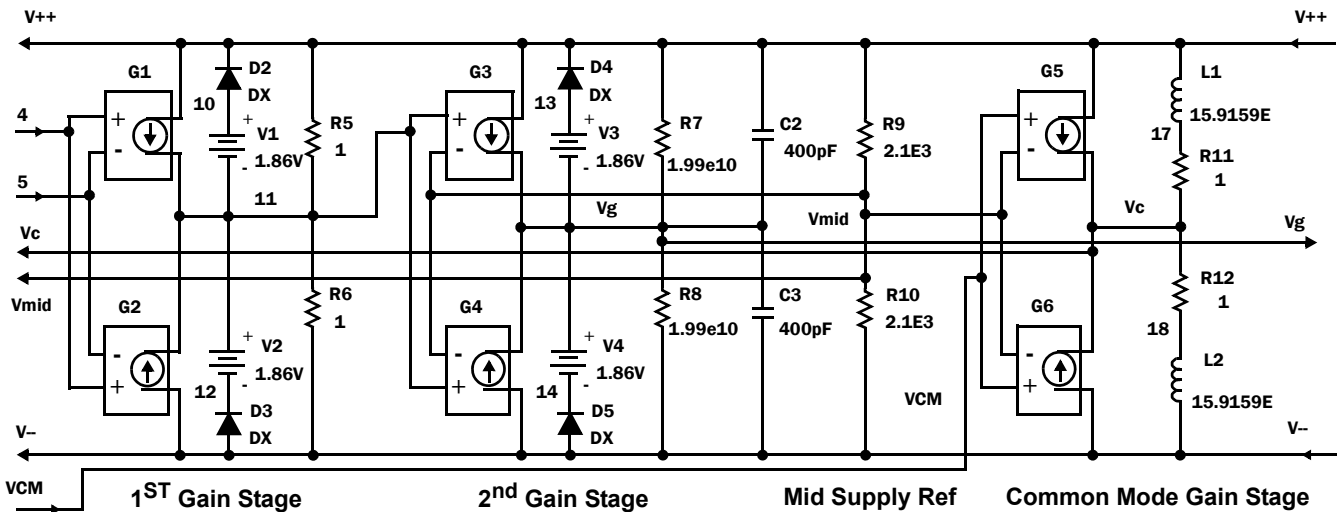
In no event will Intersil be liable for special, collateral, incidental, or consequential damages in connection with or arising out of the use of this macro-model. Intersil reserves the right to make changes to the product and the macro-model without prior notice.

# ISL28117, ISL28217, ISL28417



Voltage Noise

Input Stage

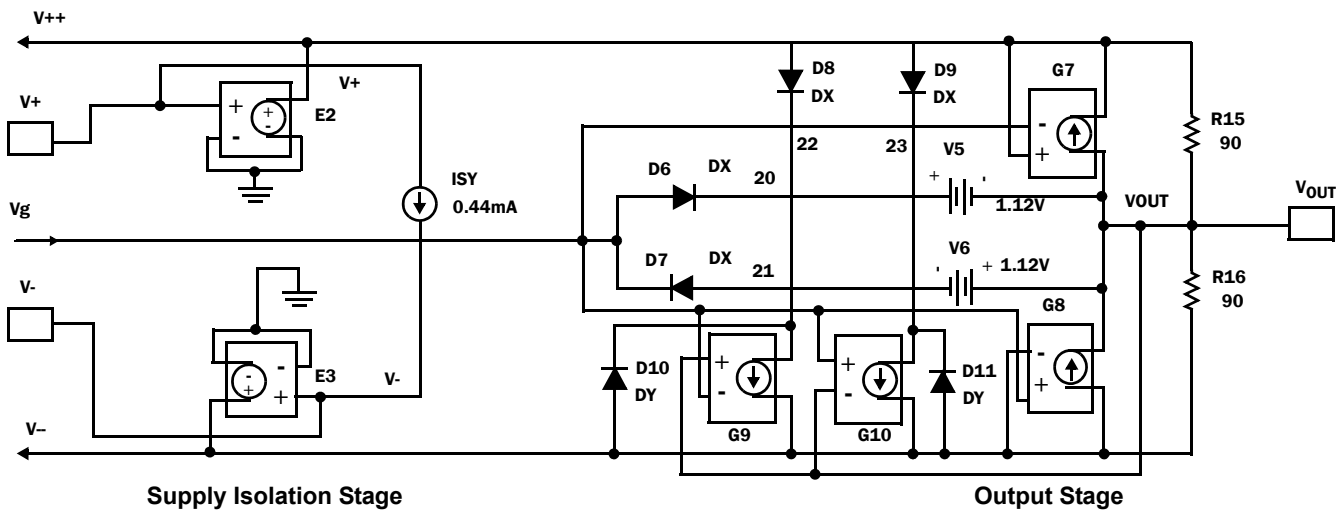


1ST Gain Stage

2nd Gain Stage

Mid Supply Ref

Common Mode Gain Stage



Supply Isolation Stage

Output Stage

FIGURE 56. SPICE SCHEMATIC

## ISL28117, ISL28217, ISL28417

```
*ISL28117 Macromodel - covers following
*products
*ISL28117
*ISL28217
*ISL28417
**Revision History:
*Revision C, LaFontaine January 31, 2012
*Model for Noise, quiescent supply currents,
*CMRR 210dB, fcm=10Hz, AVOL 155dB
*f=0.02Hz, SR = 0.5V/us, output voltage
*clamp and short ckt current limit.
*
*Copyright 2012 by Intersil Corporation Refer
*to data sheet "LICENSE STATEMENT", Use
*of this model indicates your acceptance with
*the terms and provisions in the License
*Statement.
*
*Intended use:
*This Pspice Macromodel is intended to give
*typical DC and AC performance
*characteristics under a wide range of
*external circuit configurations using
*compatible simulation platforms - such as
*iSim PE.
**
*Device performance features supported by
*this model
*Typical, room temp., nominal power supply
*voltages used to produce the following
*characteristics:
*Open and closed loop I/O impedances
*Open loop gain and phase
*Closed loop bandwidth and frequency
*response
*Loading effects on closed loop frequency
*response
*Input noise terms including 1/f effects
*Slew rate
*Input and Output Headroom limits to I/O
*voltage swing
*Supply current at nominal specified supply
*voltages
**
*Device performance features NOT
*supported by this model:
*Harmonic distortion effects
*Disable operation (if any)
*Thermal effects and/or over temperature
*parameter variation
*Limited performance variation vs. supply
*voltage is modeled
*Part to part performance variation due to
*normal process parameter spread
*Any performance difference arising from
*different packaging
*source
:
*
*          +input      |      -input
*              |        |      +Vsupply
*              |        |      -Vsupply
*              |        |      output
*              |        |      |
*.subckt ISL28117 Vin+ Vin- V+ V- VOUT
* source ISL28107subckt
*
*Voltage Noise
E_En      IN+ VIN+ 25 0 1
```

|                                   |                        |
|-----------------------------------|------------------------|
| R_R17                             | 25 0 290               |
| D_D12                             | 24 25 DN               |
| V_V7                              | 24 0 0.1               |
| *                                 |                        |
| *Input Stage                      |                        |
| I_IOS                             | IN+ VIN- DC 0.08E-9    |
| C_C6                              | IN+ VIN- 1.2E-12       |
| R_R1                              | VCM VIN- 5e11          |
| R_R2                              | IN+ VCM 5e11           |
| Q_Q1                              | 2 VIN- 1 SuperB        |
| Q_Q2                              | 3 8 1 SuperB           |
| Q_Q3                              | V-- 1 7 Mirror         |
| Q_Q4                              | 4 6 2 Cascode          |
| Q_Q5                              | 5 6 3 Cascode          |
| R_R3                              | 4 V++ 4.45e3           |
| R_R4                              | 5 V++ 4.45e3           |
| C_C4 VIN- 0                       | 2e-12                  |
| C_C5 8 0                          | 2e-12                  |
| D_D1                              | 6 7 DX                 |
| I_IEE                             | 1 V-- DC 200e-6        |
| I_IEE1                            | V++ 6 DC 96e-6         |
| V_VOS                             | 9 IN+ 8e-6             |
| E_EOS                             | 8 9 VC VMID 1          |
| *                                 |                        |
| *1st Gain Stage                   |                        |
| G_G1                              | V++ 11 4 5 8.129384e-2 |
| G_G2                              | V-- 11 4 5 8.129384e-2 |
| R_R5                              | 11 V++ 1               |
| R_R6                              | V-- 11 1               |
| D_D2                              | 10 V++ DX              |
| D_D3                              | V-- 12 DX              |
| V_V1                              | 10 11 1.86             |
| V_V2                              | 11 12 1.86             |
| *                                 |                        |
| *2nd Gain Stage                   |                        |
| G_G3                              | V++ VG 11 VMID 2.83e-3 |
| G_G4                              | V-- VG 11 VMID 2.83e-3 |
| R_R7                              | VG V++ 1.99e10         |
| R_R8                              | V-- VG 1.99e10         |
| C_C2                              | VG V++ 4e-10           |
| C_C3                              | V-- VG 4e-10           |
| D_D4                              | 13 V++ DX              |
| D_D5                              | V-- 14 DX              |
| V_V3                              | 13 VG 1.86             |
| V_V4                              | VG 14 1.86             |
| *                                 |                        |
| *Mid supply Ref                   |                        |
| R_R9                              | VMID V++ 2.1E3         |
| R_R10                             | V-- VMID 2.1E3         |
| I_ISY                             | V+ V- DC 0.44E-3       |
| E_E2                              | V++ 0 V+ 0 1           |
| E_E3                              | V-- 0 V- 0 1           |
| *                                 |                        |
| *Common Mode Gain Stage with Zero |                        |
| G_G5                              | V++ VC VCM VMID 3.162  |
| G_G6                              | V-- VC VCM VMID 3.1622 |
| R_R11                             | VC 17 1                |
| R_R12                             | 18 VC 1                |
| L_L1                              | 17 V++ 15.9159E-3      |
| L_L2                              | 18 V-- 15.9159E-3      |

```
*Output Stage with Correction Current Sources
G_G7      VOUT V++ V++ VG 1.11e-2
G_G8      V-- VOUT VG V-- 1.11e-2
G_G9      22 V-- VOUT VG 1.11e-2
G_G10     23 V-- VG VOUT 1.11e-2
D_D6      VG 20 DX
D_D7      21 VG DX
D_D8      V++ 22 DX
D_D9      V++ 23 DX
D_D10     V-- 22 DY
D_D11     V-- 23 DY
V_V5      20 VOUT 1.12
V_V6      VOUT 21 1.12
R_R15     VOUT V++ 9E1
R_R16     V-- VOUT 9E1
*

.model SuperB npn
+ is=184E-15 bf=30e3 va=15 ik=70E-3 rb=50
+ re=0.065 rc=35 cje=1.5E-12 cjc=2E-12
+ kf=0 af=0
.model Cascode npn
+ is=502E-18 bf=150 va=300 ik=17E-3
+rb=140 re=0.011 rc=900 cje=0.2E-12
+cjc=0.16E-12f kf=0 af=0
.model Mirror pnp
+ is=4E-15 bf=150 va=50 ik=138E-3 rb=185
+ re=0.101 rc=180 cje=1.34E-12
+cjc=0.44E-12 kf=0 af=0
.model DN D(KF=6.69e-9 AF=1)
.MODEL DX D(IS=1E-12 Rs=0.1)
.MODEL DY D(IS=1E-15 BV=50 Rs=1)
.ends ISL28117
```

FIGURE 57. SPICE NET LIST

## Characterization vs Simulation Results

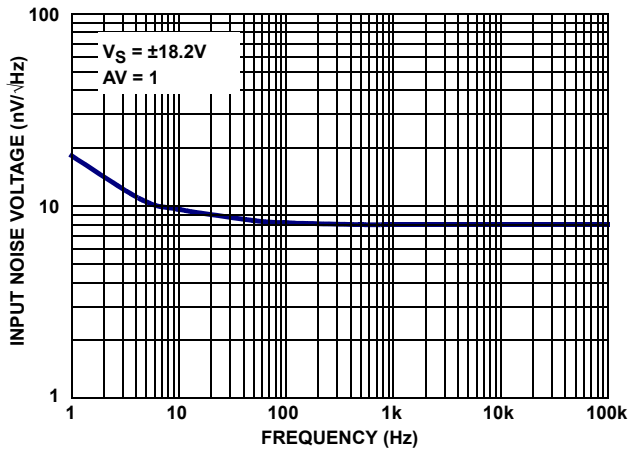


FIGURE 58. CHARACTERIZED INPUT NOISE VOLTAGE

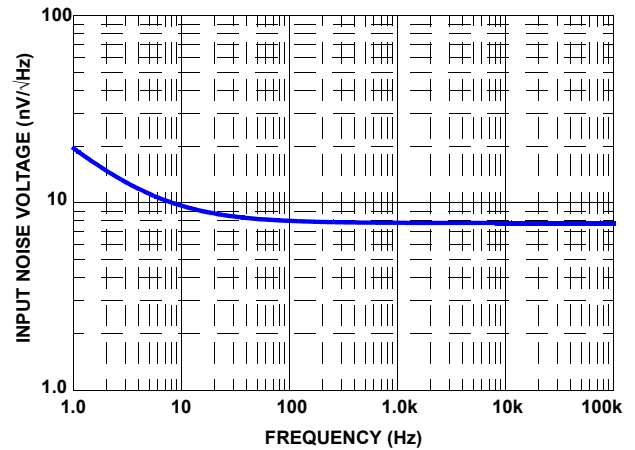


FIGURE 59. SIMULATED INPUT NOISE VOLTAGE

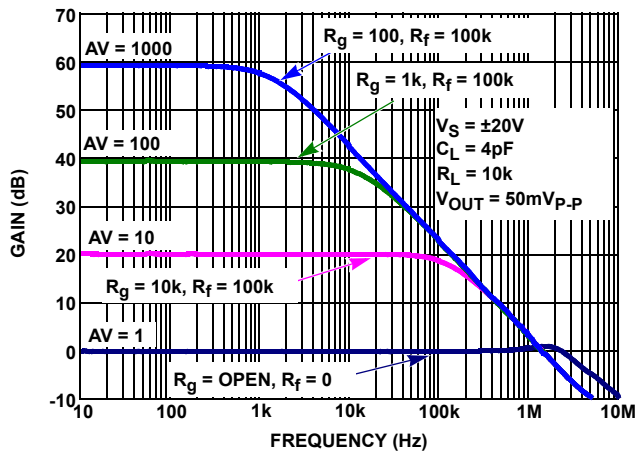


FIGURE 60. CHARACTERIZED CLOSED LOOP GAIN vs FREQUENCY

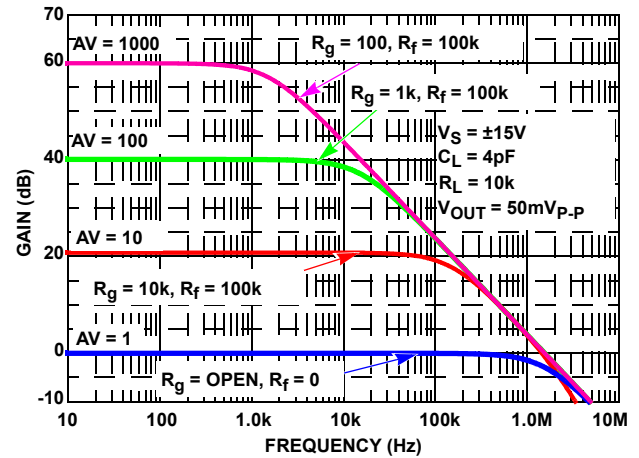


FIGURE 61. SIMULATED CLOSED LOOP GAIN vs FREQUENCY

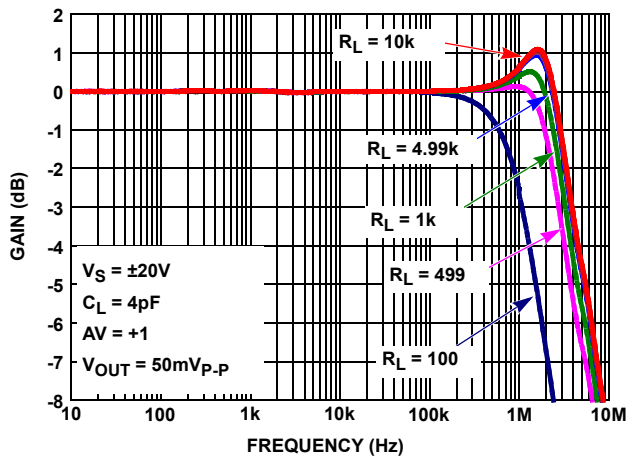


FIGURE 62. CHARACTERIZED CLOSED LOOP GAIN vs  $R_L$

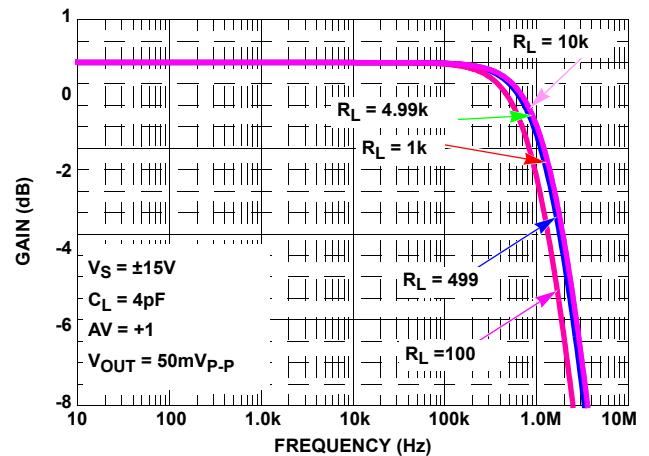


FIGURE 63. SIMULATED CLOSED LOOP GAIN vs  $R_L$



## Characterization vs Simulation Results (Continued)

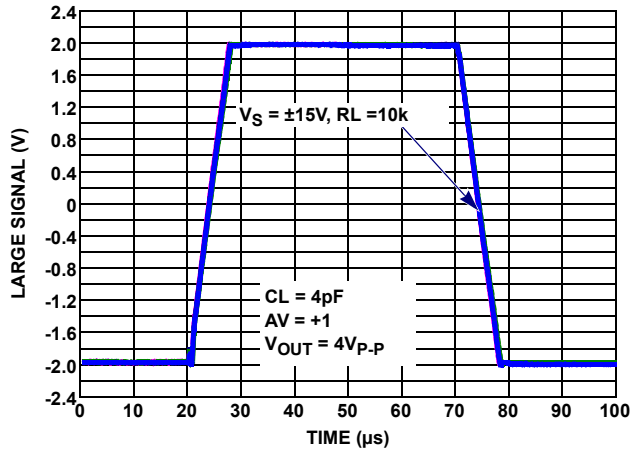


FIGURE 64. CHARACTERIZED LARGE SIGNAL TRANSIENT RESPONSE vs  $R_L$   $V_S = \pm 15V$

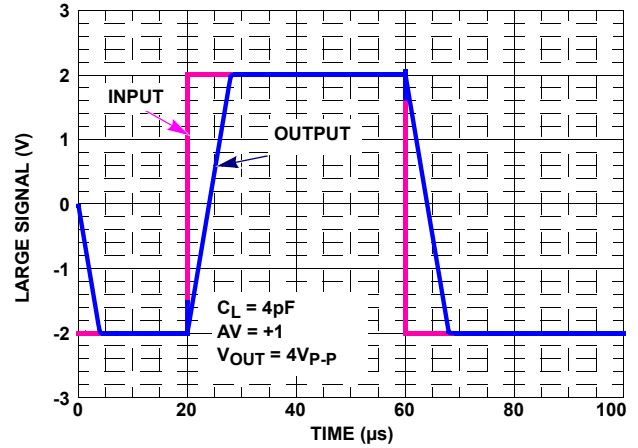


FIGURE 65. SIMULATED LARGE SIGNAL 10V STEP RESPONSE

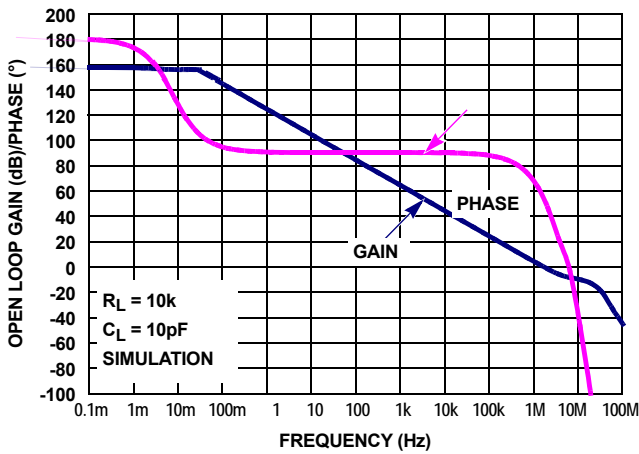


FIGURE 66. SIMULATED OPEN-LOOP GAIN, PHASE vs FREQUENCY

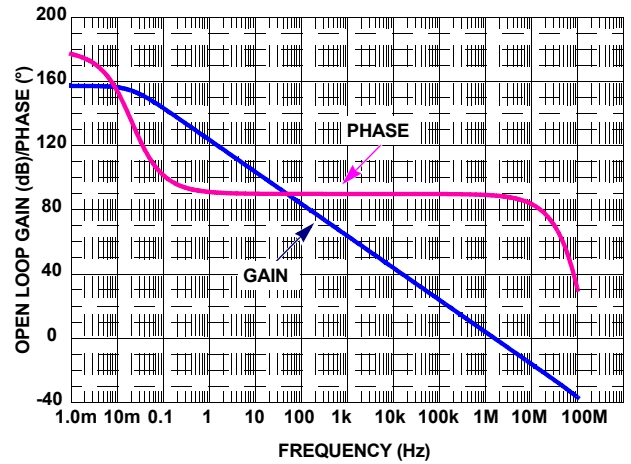


FIGURE 67. SIMULATED OPEN-LOOP GAIN, PHASE vs FREQUENCY

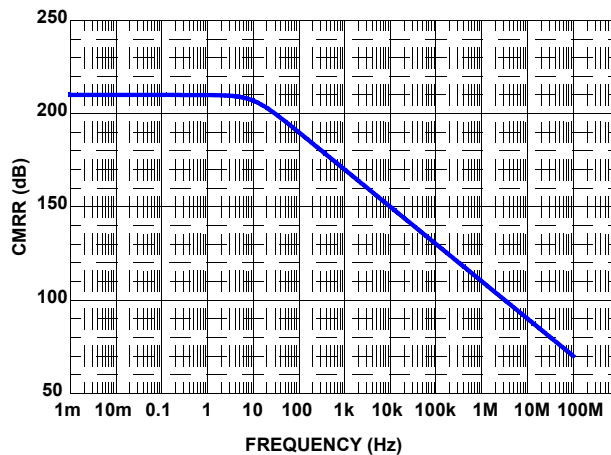


FIGURE 68. SIMULATED CMRR vs FREQUENCY

## Revision History

The revision history provided is for informational purposes only and is believed to be accurate, but not warranted. Please go to web to make sure you have the latest Rev.

| DATE               | REVISION  | CHANGE   |
|--------------------|-----------|--|
| September 11, 2012 | FN6632.10 | Feature on Page 1: Added No phase reversal.<br>Removed from ordering information QFN parts ISL28417FRZ (not release part) on Page 2 .<br>Removed all instances of QFN through document (front page, table of contents, thermal information, pin description and POD.<br>Added to the typical performance curves table figure 53 on page 19: <b>Common mode input impedance.</b>  |
| February 23, 2012  | FN6632.9  | "Ordering Information" on page 2:<br>Removed "Coming soon" from ISL28417FVZ and changed Part Marking column from "28417 FVZ" to "28417 FVZ-C". Changed "-40 to +125" to "200 C-grade"<br>Added new Part Number ISL28417 FVBZ<br>Electrical Spec changes:<br>VOS Description Section: page 6 & page 8: Changed "Input Offset Voltage; SOIC Package" to Input Offset Voltage; SOIC, TSSOP Package"<br><br>TCVOS Description section: page 7 & page 9: Changed;Input Offset Voltage Temperature Coefficient; SOIC Package to Input Offset Voltage Temperature Coefficient; SOIC, TSSOP Package<br><br>TCIOS Conditions section: page 7 & page 9: Changed "ISL28417 SOIC B and C Grade" to "ISL28417 SOIC, TSSOP B and C Grade".   |
| February 10, 2012  |           | "Ordering Information" on page 2:<br>Updated Pkg. Dwg. # for ISL28117FUBZ, ISL28117FUZ, ISL28217FUBZ & ISL28217FUZ from M8.118 to M8.118B<br>Updated Pkg. Dwg. # for ISL28117FRTBZ, ISL28117FRTZ, ISL28217FRTBZ & ISL28217FRTZ from L8.3x3A to L8.3x3K<br>Updated Pkg. Dwg. # for ISL28417FRZ from L16.4x4 to L16.4x4E<br><br>"Thermal Information" on page 6:<br>Added $\Theta_{JA}$ and $\Theta_{JC}$ for 16 Ld QFN and 14 Ld TSSOP<br><br>Figure 52, "% OVERSHOOT vs LOAD CAPACITANCE, VS = $\pm 15V$ " on page 18:<br>X-Axis (Capacitance pF) values 1k and 10k were shifted 1 decade to the right. Shifted 1 decade to the left and added new label "100k" at the extreme right (where the "10k" value was located).<br><br>Added dual and quad to the "SPICE NET LIST" on page 23.<br><br>"Package Outline Drawing (M8.118B)" on page 31:<br>Changed from M8.118 to M8.118B<br>Top View:<br>Package width & height changed from 3.0 $\pm$ 0.05 to 3.0 $\pm$ 0.1<br>Package height from lead to lead changed from 4.9 $\pm$ 0.15 to 4.9 $\pm$ 0.2<br><br>Side View 2:<br>Lead thickness changed from 0.09-0.20 to 0.15 $\pm$ 0.05mm<br><br>Side View 1:<br>Package height changed from 0.85 $\pm$ 0.10 to 0.86 $\pm$ 0.05<br>Changed lead width from 0.25-0.036 to 0.23-0.36<br><br>Detail X:<br>Foot of lead length changed from 0.55 $\pm$ 0.15 to 0.53 $\pm$ 0.10<br><br>"Package Outline Drawing (L8.3x3K)" on page 32:<br>Changed from L8.3x3A to L8.3x3K<br>Bottom View:<br>Changed lead height from 0.3 $\pm$ 0.1 to 0.4 $\pm$ 0.05<br>Changed lead width from 0.30 $\pm$ 0.05 to 0.25 $\pm$ 0.05<br><br>Land Pattern:<br>Changed lead width from 0.30 to 0.25 |

## Revision History

The revision history provided is for informational purposes only and is believed to be accurate, but not warranted. Please go to web to make sure you have the latest Rev. (Continued)

| DATE             | REVISION | CHANGE   |
|------------------|----------|--|
| October 11, 2011 | FN6632.8 | <p>Figure 27 added "Positive" to Short Circuit Current title</p> <p>Figure 28 added "Negative" to Short Circuit Current title</p> <p>Figure 36 y axis label units changed from (nV/<math>\sqrt{\text{Hz}}</math>) to (nV/<math>\sqrt{\text{Hz}}</math>)</p> <p>Figure 37 y axis label units changed from pA/<math>\sqrt{\text{Hz}}</math> to pA/<math>\sqrt{\text{Hz}}</math></p> <p>Figure 31, 33 changed from VOUT vs Temperature to VOH vs Temperature</p> <p>Figure 32, 34 changed from VOUT vs Temperature to VOL vs Temperature</p> <p>Table of Contents on page 5 updated to list all package outline drawings</p> <p>Changed POD M14.15 to MDP0027</p> <p>Changed TClos for ISL28417 SOIC grade B and C on pages 7 and 9 from <math>\pm 3.5\text{pA/C}</math> to <math>\pm 4.0\text{pA/C}</math></p>   |
| October 7, 2011  |          | <ol style="list-style-type: none"> <li>Pg 2 Ordering Information: <ol style="list-style-type: none"> <li>Added ordering information rows for ISL28417FBBZ (B grade) and ISL28417FBZ (C grade).</li> <li>Add Table of Contents</li> </ol> </li> <li>Pg 5 Abs Max and Thermal Information Tables: <ol style="list-style-type: none"> <li>Added HBM, MM, and CDM ESD levels for the '417</li> <li>Added <math>\theta_{JA}</math> and <math>\theta_{JC}</math> values for the 14 Ld SOIC</li> </ol> </li> <li>Pg 6 <math>\pm 15\text{V}</math> electrical Specs <ol style="list-style-type: none"> <li>Added ISL28417 B &amp; C grade VOS and limits</li> <li>Added ISL28417 B &amp; C grade TCVOS and limits</li> <li>Added ISL28417 B &amp; C grade TCIOs and limits</li> </ol> </li> <li>Pg 7 <ol style="list-style-type: none"> <li>Converted AVOL limits and units from 3kV/mV Min and 14kV/mV typ to 130dB and 143dB respectively</li> </ol> </li> <li>Pg 8 <math>\pm 5\text{V}</math> electrical Specs <ol style="list-style-type: none"> <li>Added ISL28417 B &amp; C grade VOS and limits</li> </ol> </li> <li>Pg 9 <ol style="list-style-type: none"> <li>Added ISL28417 B &amp; C grade TCVOS and limits</li> <li>Added ISL28417 B &amp; C grade TCIOs and limits</li> <li>Converted AVOL limits and units from 3kV/mV Min and 14kV/mV Typ to 130dB and 143dB respectively</li> </ol> </li> <li>Pg 17 Applications Information <ol style="list-style-type: none"> <li>Added Unused Channels paragraph and Figure 54.</li> </ol> </li> </ol>   |
| July 12, 2011    | FN6632.7 | <ol style="list-style-type: none"> <li>Releasing ISL28217FUZ MSOP Grade C package. Remove 'Coming Soon' from Order Information Table</li> <li>Page 5, added: Machine Model (ISL28217 MSOP only). . . . 300V</li> <li>Under Electrical Spec <math>\pm 15\text{V}</math> and <math>\pm 5\text{V}</math> tables, changed Typical Rise Time and Fall Time from: Rise Time 100ns, Fall Time 120ns, to: Rise Time 130ns, Fall Time 130ns.</li> <li>Under Electrical Spec <math>\pm 15\text{V}</math> and <math>\pm 5\text{V}</math> table for Vos and TCvos, added in row for ISL28217 MSOP Grade C package. Added Vos and TCvos limits for 25C and Full Temp.</li> <li>For Typical performance curves for Vos Histograms, added note that histogram is based on ISL28217FBBZ for Grade B figures and ISL28217FBZ for Grade C figures. (Figures 3-6, added part number label to graph below Vs)</li> <li>Under Electrical Spec <math>\pm 15\text{V}</math> and <math>\pm 5\text{V}</math> tables, changed TYP for Open Loop Gain from 18,000V/mV to 14,000V/mV</li> </ol>  |
| December 2, 2010 | FN6632.6 | <ol style="list-style-type: none"> <li>Updated "Ordering Information" table on page 2. Removed Coming Soon for ISL28117FRTBZ and ISL28117FUBZ parts. Added in the Vos (MAX) numbers in those rows (75 and 70 respectively).</li> <li>Corrected part marking in "Ordering Information" table on page 2 for ISL28117FRTZ from 8117 -C to -C 8117</li> <li>Corrected part marking in "Ordering Information" table on page 2 for ISL28217FRTZ from 8217 -C to -C 8217</li> <li>Updated Tape &amp; Reel note in "Ordering Information" table on page 2 from "Add "-T7", "-T7A" or "-T13" suffix for tape and reel." to new standard "Add "-T*" suffix for tape and reel." The "*" covers all possible tape and reel options</li> <li>Updated "Electrical Specifications" Table for "Vos" on page 6 and "TCVOS" on page 7 <ol style="list-style-type: none"> <li>Added data row for Offset Voltage; MSOP Grade B Package; ISL28117</li> <li>Added data row for Offset Voltage; TDFN Grade B Package; ISL28117</li> <li>Added data row for Input Offset Voltage Temperature Coefficient; MSOP Grade B Package; ISL28117</li> <li>Added data row for Input Offset Voltage Temperature Coefficient; TDFN Grade B Package; ISL28117</li> </ol> </li> <li>Removed "Temperature data established by characterization" from common conditions of spec table. Removed note "Parameters with MIN and/or MAX limits are 100% tested at +25°C, unless otherwise specified. Temperature limits established by characterization and are not production tested." from Min Max columns of spec table. Replaced with new standard note in Min Max columns, "Compliance to datasheet limits is assured by one or more methods: production test, characterization and/or design."</li> </ol> |

# ISL28117, ISL28217, ISL28417

## Revision History

The revision history provided is for informational purposes only and is believed to be accurate, but not warranted. Please go to web to make sure you have the latest Rev. (Continued)

| DATE              | REVISION | CHANGE   |
|-------------------|----------|--|
| August 31, 2010   | FN6632.5 | <ol style="list-style-type: none"> <li>General changes: <ol style="list-style-type: none"> <li>Added in Quad devices to the datasheet for SOIC, TSSOP and QFN packages.</li> <li>Added in TDFN packages for single and dual devices.</li> <li>Added in new VOS and TCVOS limits for TDFN packages</li> <li>Added Tja and Tjc Notes for TDFN Package which are "direct attach (Tja)" and "bottom (Tjc)"</li> </ol> </li> <li>Specific changes: <ol style="list-style-type: none"> <li>Added in ISL28417 to title and front page info on page 1.</li> <li>Added in ISL28117FRTZ, ISL28117FRTBZ, ISL28217FRTZ, ISL28217FRTBZ, ISL28417FBZ, ISL28417FVZ, and ISL28417FRZ packages to Ordering information on page 2 and page 2. Added in -T7 and -T7A tape and reel extensions where applicable.</li> <li>Added in TDFN, 14 Ld SOIC, 14 Ld TSSOP and 16 Ld QFN to pin configurations on page 3 and page 3.</li> <li>Updated Pin Descriptions tables with new added in packages on page 4.</li> <li>Abs Max Table added in thermal packaging info for TDFN packages on page 6.</li> <li>Electrical Specifications Table - Added two new line items for VOS spec. TDFN package ISL28217 Grade B limits <math>\pm 70\text{uV}</math> 25C and <math>\pm 140\text{uV}</math> full temp. TDFN package ISL28x17 Grade C limits <math>\pm 150\text{uV}</math> 25C and <math>\pm 250\text{uV}</math> full temp on page 6 and page 8.</li> <li>Electrical Specifications Table - Added two new line items for TCVOS spec. TDFN package ISL28217 Grade B limits <math>\pm 0.7\text{uV/C}</math> full temp. TDFN package ISL28x17 Grade C limits <math>\pm 1\text{uV/C}</math> on page 7 and page 9.</li> <li>Added in PODs for L8.3x3A, M14.15, M14.173, and L16.4x4</li> </ol> </li> </ol> |
| March 18, 2010    | FN6632.4 | <ol style="list-style-type: none"> <li>Updated "Ordering Information" on page 2 by adding two rows for MSOP packages ISL28117FUBZ and ISL28117FUZ, which are scheduled to release Q2 2010. Added Pinout accordingly.</li> <li>Added POD for MSOP M8.118 to the end of datasheet</li> <li>In "Ordering Information" on page 2, Separated each part number with it's own specific -T7 and -T13 suffix and removed "Add -T7" or "-T13" suffix for Tape and Reel." from Note 1.</li> <li>Updated <math>\pm 15</math> and <math>\pm 5\text{V}</math> Electrical Specification table with the following edits: <ol style="list-style-type: none"> <li>Separated VOS specs for SOIC and MSOP Grade C packages. Added new VOS specs for MSOP Grade C package.</li> <li>Separated TCVOS specs for SOIC and MSOP Grade C packages. Added new TCVOS specs for MSOP Grade C package.</li> </ol> </li> <li>Added "Thermal Information" on page 6 for ISL28117 MSOP package.</li> </ol>  |
| March 3, 2010     |          | <p>Added "Related Literature" on page 1.</p> <p>Added Evaluation Boards to "Ordering Information" on page 2.</p> <p>Added Theta JC values to "Thermal Information" on page 6. Added applicable Theta JC Note 7.</p> <p>Updated Theta JA for ISL28217 8 Ld SOIC from <math>115^\circ\text{C/W}</math> to <math>105^\circ\text{C/W}</math>.</p>  |
| January 21, 2010  |          | <p>Part marking in "Ordering Information" on page 2 changed as follows:</p> <p>ISL28117FBBZ changed from "28117 FBZ -B" to "28117 FBZ"</p> <p>ISL28117FBZ changed from "28117 FBZ" to "28117 FBZ -C"</p> <p>ISL28217FBBZ changed from "28217 FBZ -B" to "28217 FBZ"</p> <p>ISL28217FBZ changed from "28217 FBZ" to "28217 FBZ -C"</p>  |
| December 24, 2009 |          | <p>On page 10: Changed label in Figure 3 from "<math>V_S = +5\text{V}</math>" to "<math>V_S = \pm 5\text{V}</math>"</p> <p>On page 10: Changed label in Figure 4 from "<math>V_S = +15\text{V}</math>" to "<math>V_S = \pm 15\text{V}</math>"</p>  |
| November 25, 2009 |          | <p>Changed Typical VOS spec from "13" to "8" (B Grade), "19" to "4" (C Grade), IB from "0.18" to "0.08, IOS from "0.3" to "0.08". Edited Spice Schematic - L1 from "95.4957" to "15.9159E", R1 from "6k" to 1, R9 from "1" to "2.1E3", R10 from "1" to "2.1E3, R12 from "6k" to "1", L2 from "95.4957" to "15.9159E". Edited Spice Net List - Changed Revision from "A" to "B", Date change from "October 29th 2009" to "November 20th 2009", added after AOL "SR = 0.5V/<math>\mu\text{sec}</math>, Input Stage changed in I_IOS from "0.3E-9" to 0.08E-9, V_VOS "13e-6" to "8e-6", Mid supply Ref R_R9 and R_R10 changed "1" to "2.1E3", Common Mode Gain Stage with Zero change in G_G5 and G_G6 "5.27046e-15" to "3.162277", R_R11 and R_R12 "6.3" to "1", L_L1 and L_L2 "95.4957" to "15.9159E-3"</p>   |
| November 12, 2009 | FN6632.3 | <p>Updated Typical Performance Curves Figure 5, 7, 9, 11, 13, 15, 17 and 19. Added Spice Model and license statement. Replaced typical application schematic.</p>  |

## Revision History

The revision history provided is for informational purposes only and is believed to be accurate, but not warranted. Please go to web to make sure you have the latest Rev. (Continued)

| DATE              | REVISION | CHANGE  |
|-------------------|----------|---|
| October 16, 2009  | FN6632.2 | On page 2 "Ordering Information", changed the following:<br>a) corrected part marking for ISL28117FBBZ from "28117 -B FBZ" to "28117 FBZ -B". Corrected part marking for ISL28217FBBZ from "28217-B FBZ" to "28217 FBZ -B"<br>B) Updated package outline drawing to most recent revision (no changes were made to package dimensions; land pattern was added and dimensions were moved from table onto drawing)<br>c) Added "Add "-T7" or "-T13" suffix for tape and reel." to the tape and reel Note 1.<br>d) added Note 3 callout to all parts (Note 3 reads: "For Moisture Sensitivity Level (MSL), please see device information page for ISL28117, ISL28217. For more information on MSL please see techbrief TB363.")<br>e) removed "Coming Soon" from ISL28117FBBZ, ISL28117FBZ & ISL28217FBBZ devices |
| October 8, 2009   | FN6632.1 | 1. Removed "very" from "...low noise.." 1st sentence, page 1.<br>2. Removed "Low" from 6th bullet under features, page 1.<br>3. Modified typical characteristics curves to show conservative performance. Specific channel designations removed. On temperature curves, changed formatting to indicate range from typical value. Changes include:<br>a. Removed former Figures 1, 3, 5, 7, 9, 10, 13, 14, 17, 18, 21, 22, 25, 26, 29, 30, 33, 34, 37 & 38 (all Channel A curves)<br>b. Replaced former Figures 19, 20, 23, 24, 27, 28, 31, 32, 35, 36, 39 & 40 with new Figures 9 thru 20 (all "conservative channels")<br>c. Added Figures 30, 31, 32<br>4. Updated TCvos histogram on page 1 to match TCvos histogram Figure 6 on page 7 (same graphic)<br>5. Added temp labels to Figures 28 & 29          |
| September 3, 2009 | FN6632.0 | Initial Release   |

## About Intersil

Intersil Corporation is a leader in the design and manufacture of high-performance analog, mixed-signal and power management semiconductors. The company's products address some of the fastest growing markets within the industrial and infrastructure, personal computing and high-end consumer markets. For more information about Intersil or to find out how to become a member of our winning team, visit our website and career page at [www.intersil.com](http://www.intersil.com).

For a complete listing of Applications, Related Documentation and Related Parts, please see the respective product information page. Also, please check the product information page to ensure that you have the most updated datasheet: [ISL28117](#), [ISL28217](#), [ISL28417](#)

To report errors or suggestions for this datasheet, please go to: [www.intersil.com/askourstaff](http://www.intersil.com/askourstaff)

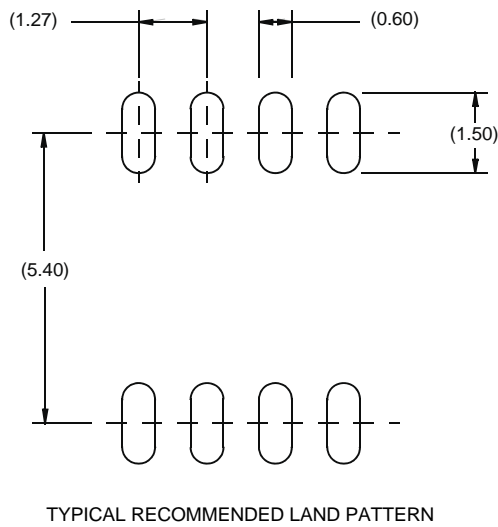
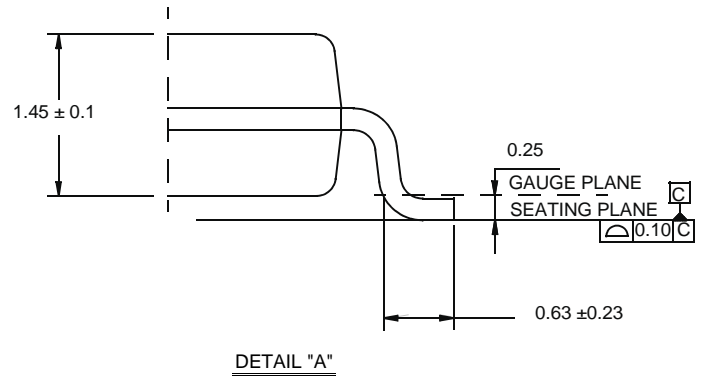
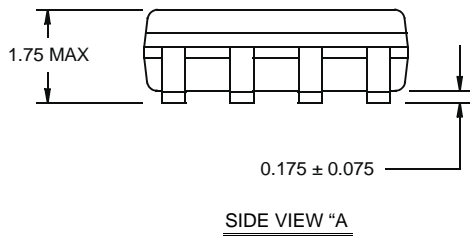
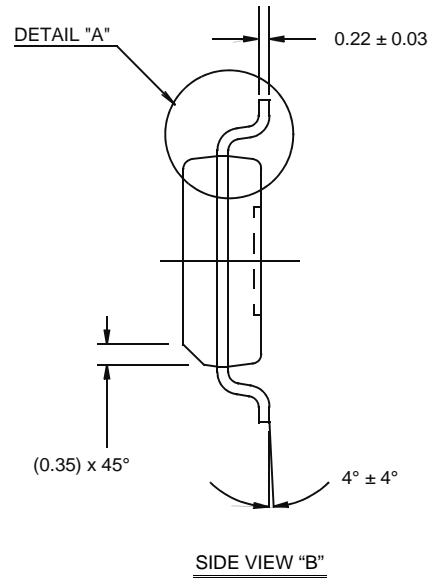
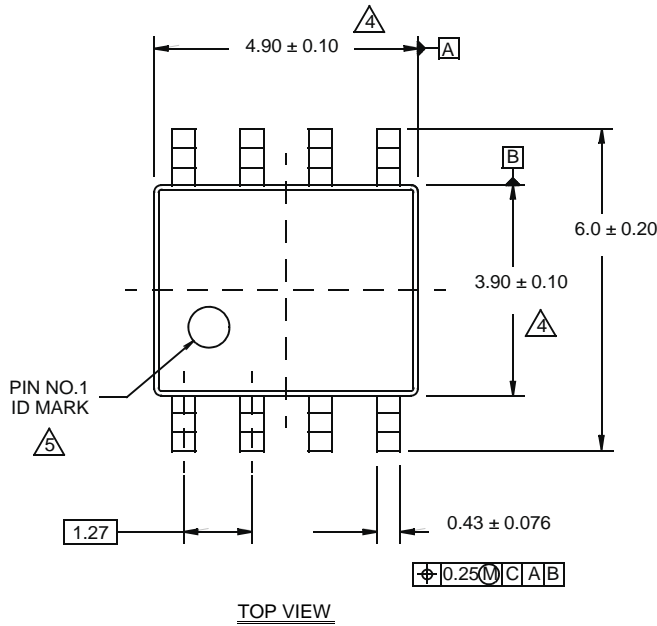
Reliability reports are available from our website at: <http://rel.intersil.com/reports/search.php>

## Package Outline Drawing (M8.15E)

### M8.15E

8 LEAD NARROW BODY SMALL OUTLINE PLASTIC PACKAGE

Rev 0, 08/09



#### NOTES:

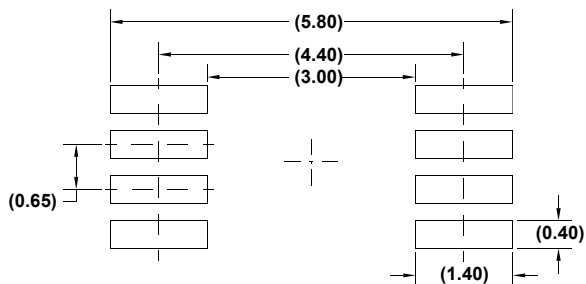
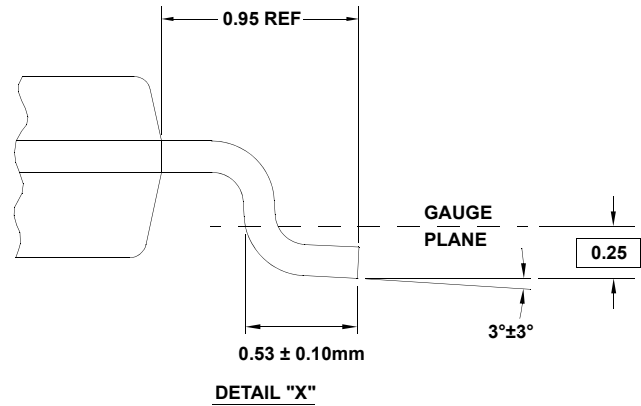
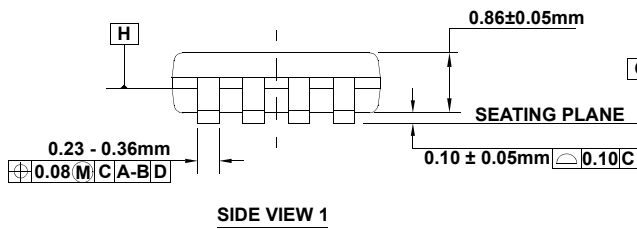
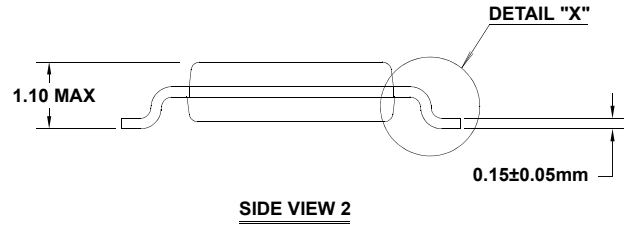
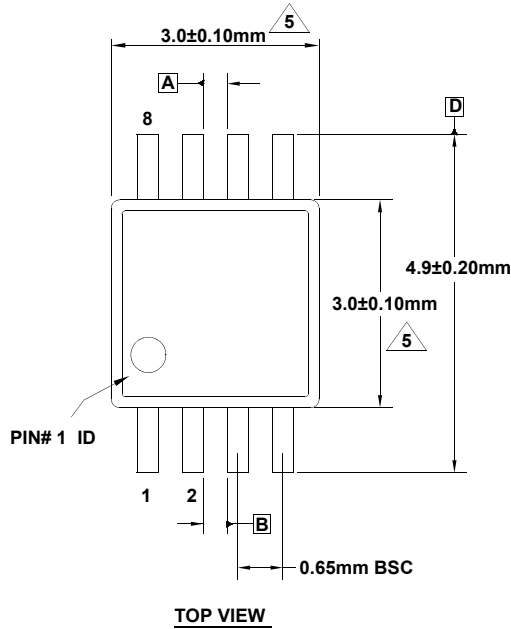
1. Dimensions are in millimeters.  
Dimensions in ( ) for Reference Only.
2. Dimensioning and tolerancing conform to AMSE Y14.5m-1994.
3. Unless otherwise specified, tolerance : Decimal  $\pm 0.05$
4. Dimension does not include interlead flash or protrusions.  
Interlead flash or protrusions shall not exceed 0.25mm per side.
5. The pin #1 identifier may be either a mold or mark feature.
6. Reference to JEDEC MS-012.

## Package Outline Drawing (M8.118B)

### M8.118B

8 LEAD MINI SMALL OUTLINE PLASTIC PACKAGE

Rev 1, 3/12



#### NOTES:

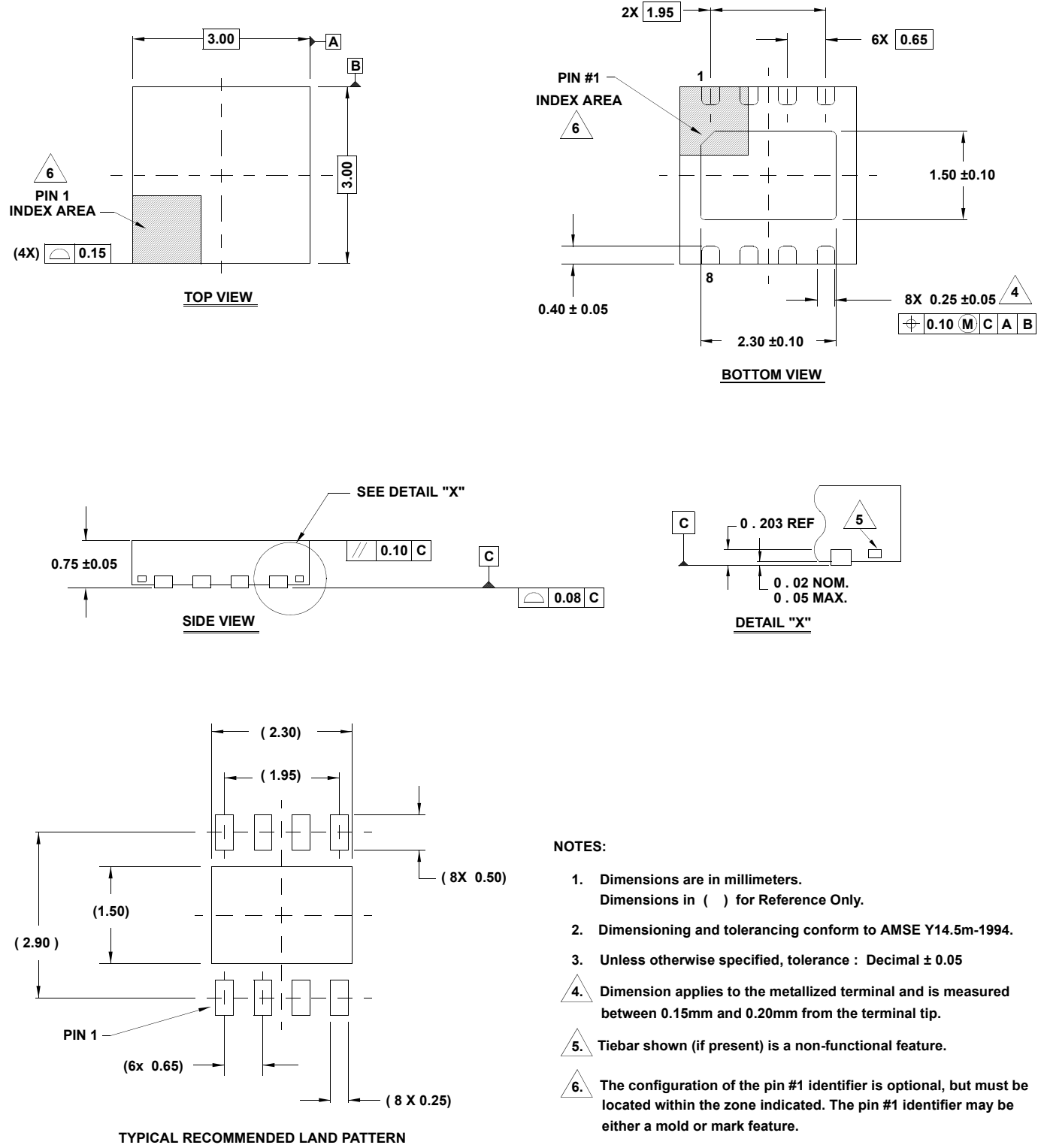
1. Dimensions are in millimeters.
2. Dimensioning and tolerancing conform to JEDEC MO-187-AA and AMSEY14.5m-1994.
3. Plastic or metal protrusions of 0.15mm max per side are not included.
4. Plastic interlead protrusions of 0.15mm max per side are not included.
5. Dimensions are measured at Datum Plane "H".
6. Dimensions in ( ) are for reference only.

## Package Outline Drawing (L8.3x3K)

### L8.3x3K

8 LEAD THIN DUAL FLAT NO-LEAD PLASTIC PACKAGE

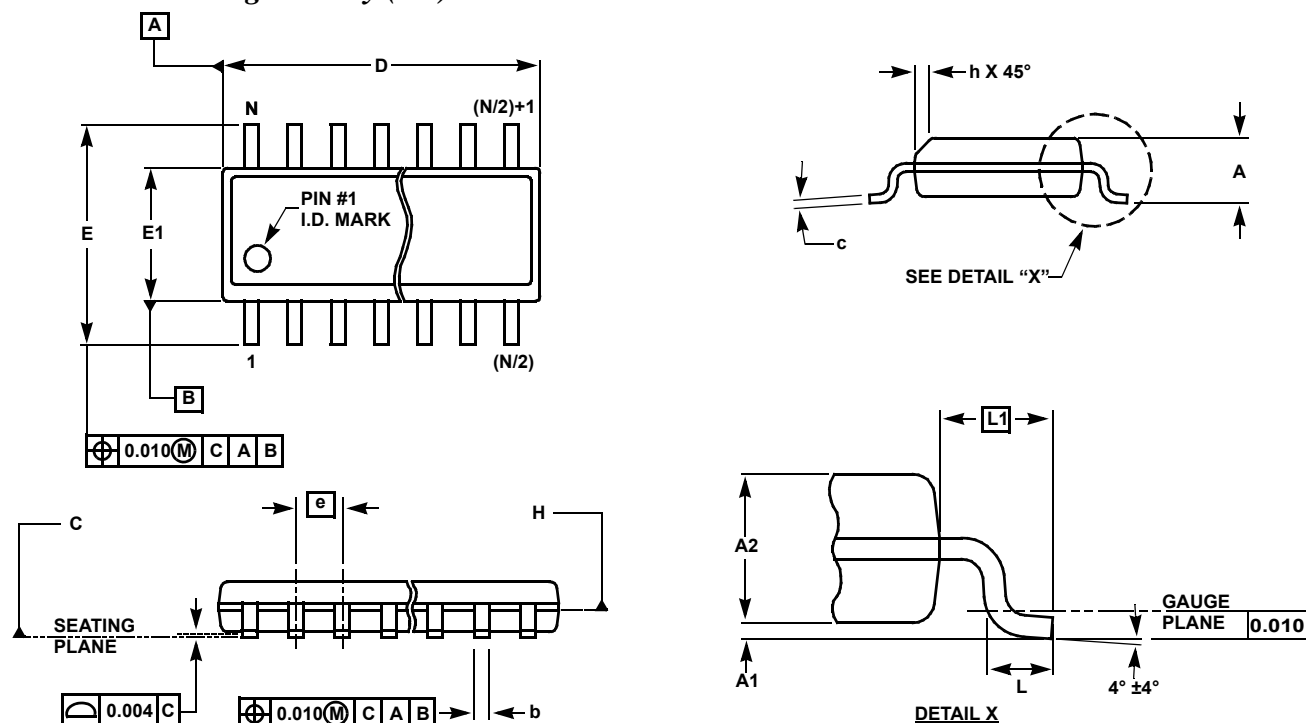
Rev 1, 9/11





# ISL28117, ISL28217, ISL28417

## Small Outline Package Family (SO)



## MDP0027

### SMALL OUTLINE PACKAGE FAMILY (SO)

| SYMBOL | INCHES |       |                  |                           |                  |                   |                   | TOLERANCE | NOTES |
|--------|--------|-------|------------------|---------------------------|------------------|-------------------|-------------------|-----------|-------|
|        | SO-8   | SO-14 | SO16<br>(0.150") | SO16 (0.300")<br>(SOL-16) | SO20<br>(SOL-20) | SO24 (SOL-<br>24) | SO28 (SOL-<br>28) |           |       |
| A      | 0.068  | 0.068 | 0.068            | 0.104                     | 0.104            | 0.104             | 0.104             | MAX       | -     |
| A1     | 0.006  | 0.006 | 0.006            | 0.007                     | 0.007            | 0.007             | 0.007             | ±0.003    | -     |
| A2     | 0.057  | 0.057 | 0.057            | 0.092                     | 0.092            | 0.092             | 0.092             | ±0.002    | -     |
| b      | 0.017  | 0.017 | 0.017            | 0.017                     | 0.017            | 0.017             | 0.017             | ±0.003    | -     |
| c      | 0.009  | 0.009 | 0.009            | 0.011                     | 0.011            | 0.011             | 0.011             | ±0.001    | -     |
| D      | 0.193  | 0.341 | 0.390            | 0.406                     | 0.504            | 0.606             | 0.704             | ±0.004    | 1, 3  |
| E      | 0.236  | 0.236 | 0.236            | 0.406                     | 0.406            | 0.406             | 0.406             | ±0.008    | -     |
| E1     | 0.154  | 0.154 | 0.154            | 0.295                     | 0.295            | 0.295             | 0.295             | ±0.004    | 2, 3  |
| e      | 0.050  | 0.050 | 0.050            | 0.050                     | 0.050            | 0.050             | 0.050             | Basic     | -     |
| L      | 0.025  | 0.025 | 0.025            | 0.030                     | 0.030            | 0.030             | 0.030             | ±0.009    | -     |
| L1     | 0.041  | 0.041 | 0.041            | 0.056                     | 0.056            | 0.056             | 0.056             | Basic     | -     |
| h      | 0.013  | 0.013 | 0.013            | 0.020                     | 0.020            | 0.020             | 0.020             | Reference | -     |
| N      | 8      | 14    | 16               | 16                        | 20               | 24                | 28                | Reference | -     |

Rev. M 2/07

#### NOTES:

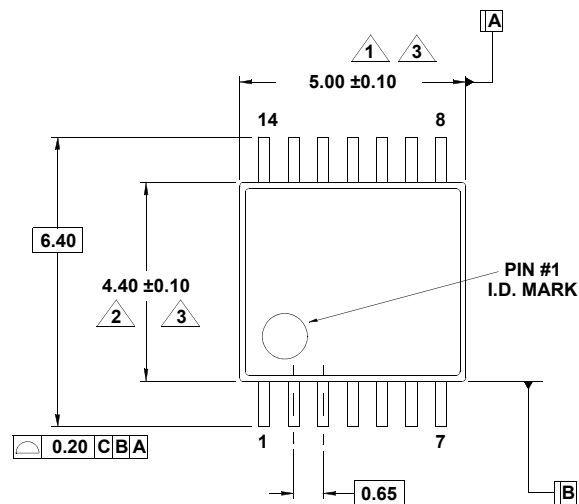
1. Plastic or metal protrusions of 0.006" maximum per side are not included.
2. Plastic interlead protrusions of 0.010" maximum per side are not included.
3. Dimensions "D" and "E1" are measured at Datum Plane "H".
4. Dimensioning and tolerancing per ASME Y14.5M-1994

## Package Outline Drawing (M14.173)

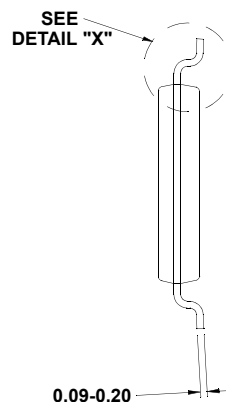
### M14.173

14 LEAD THIN SHRINK SMALL OUTLINE PACKAGE (TSSOP)

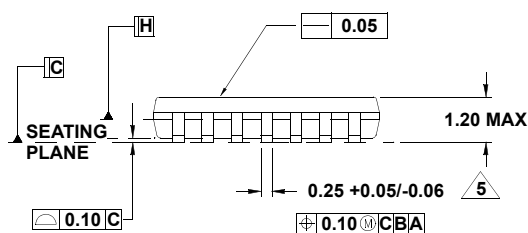
Rev 3, 10/09



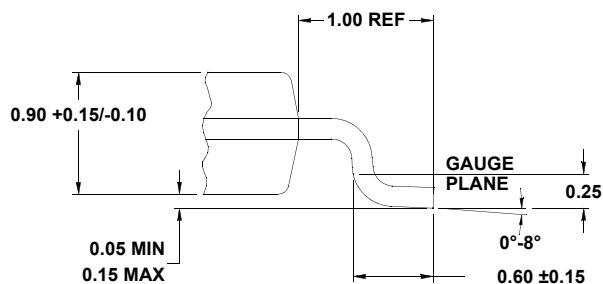
TOP VIEW



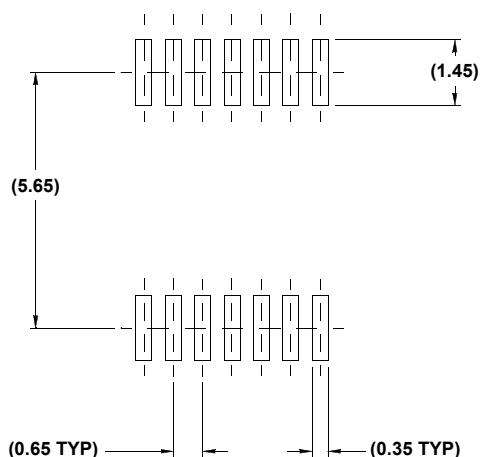
END VIEW



SIDE VIEW



DETAIL "X"



TYPICAL RECOMMENDED LAND PATTERN

#### NOTES:

1. Dimension does not include mold flash, protrusions or gate burrs. Mold flash, protrusions or gate burrs shall not exceed 0.15 per side.
2. Dimension does not include interlead flash or protrusion. Interlead flash or protrusion shall not exceed 0.25 per side.
3. Dimensions are measured at datum plane H.
4. Dimensioning and tolerancing per ASME Y14.5M-1994.
5. Dimension does not include dambar protrusion. Allowable protrusion shall be 0.80mm total in excess of dimension at maximum material condition. Minimum space between protrusion and adjacent lead is 0.07mm.
6. Dimension in ( ) are for reference only.
7. Conforms to JEDEC MO-153, variation AB-1.

# Mouser Electronics

Authorized Distributor

Click to View Pricing, Inventory, Delivery & Lifecycle Information:

[Intersil:](#)

[ISL28117FUZ-T7](#) [ISL28217FBBZ-T7A](#) [ISL28217FBZ-T7A](#)